

## Anti-Kv1.6 (Kcna6)

**Product #:** APC-003

**Current Lot #** AN-03

**Host:** Rabbit.

**Type:** Polyclonal.

**Epitope:** GST fusion protein with a sequence NYFYH RETEQ EEQGQ YTHVT CGQPT PDLKA TDNGL GKPDF AEASR ERRSS YLPTP HRAYA EKRML TEV, corresponding to residues 463-530 of rat Kv1.6 (Accession [P17659](#)).

**Epitope location:** Intracellular, C-terminus.

**Homology with other species:** mouse, human - respectively, 67/68 and 63/68 residues identical.

**Reactivity Confirmed:** Rat.

**Identity of a fusion protein:** confirmed by DNA sequence and SDS-PAGE.

**Purity:** the serum was depleted of anti-GST antibodies by affinity chromatography on immobilized GST and from antibodies cross-reactive to other Kv1 by affinity chromatography on immobilized Kv1.1-GST and Kv1.4-GST, and then the antibody was affinity purified on immobilized Kv1.6-GST.

**Sample Sizes:** 50  $\mu$ l or 0.2 ml after reconstitution of the lyophilized powder.

**Storage before Reconstitution:** Lyophilized powder can be stored intact at room temperature for several weeks. For longer periods, it should be stored at -20°C.

**Reconstitution:** 50  $\mu$ l or 0.2 ml deionized water, depending on the sample size.

**Antibody Concentration after Reconstitution:** 0.3 mg/ml.

**Buffer after Reconstitution:** phosphate buffered saline (PBS), pH 7.4, 1% BSA, 5% sucrose, 0.025% NaN<sub>3</sub>.

**Storage after Reconstitution:** the reconstituted solution can be stored at 4°C for up to 2 weeks. For longer periods, small aliquots should be stored at -20°C or below. Avoid multiple freezing and thawing. The further dilutions should be made using a carrier protein such as BSA (1%). Centrifuge **all** antibody preparations before use (10000  $\times$  g 5 min).

**Control Antigen Included:** 50  $\mu$ g of lyophilized fusion protein (Mw 35 kDa).

**Control Antigen Storage before Reconstitution:** Lyophilized powder can be stored intact at room temperature for several weeks. For longer periods, it should be stored at -20°C.

**Control Antigen Reconstitution:** 100  $\mu$ l PBS.

**Control Antigen Storage after Reconstitution:** -20 °C.

**PreadSORption Control:** 3  $\mu$ g fusion protein per 1  $\mu$ g antibody.

**Positive control in Western blotting:** 20 ng fusion protein/Minigel lane.

**Standard Quality Control of Each Lot:** Western blotting.

### Applications:

**Western Blotting:** Rat brain membranes (1:200).

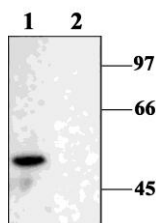
**Immunohistochemistry/immunocytochemistry.**<sup>1,2</sup>

**For research purposes only, not for human use.**

**Last Update:** July 11, 2002

### References using this antibody:

1. Smart, S.L. *et al.* (1997) *Glia* **20**, 127.
2. Chung, Y.H. *et al.* (2000) *Brain Res.* **875**, 164.
3. Chittajallu, R. *et al.* (2002) *PNAS* **99**, 2350.



Western blotting of rat brain membranes:

1. Anti-Kv1.6, 1:200
2. Ant-Kv1.6, preincubated with the control fusion protein antigen.