

Anti-Kv2.1 (DRK1, Kcnb1)

Product #: APC-012
Current Lot ##: AN-02.
Host: Rabbit.
Type: Polyclonal.

Epitope: (CY)HMLPGGGAHGSTRDQSI, corresponding to residues 841-857 of rat Kv2.1 (Accession [P15387](#)).

Epitope location: Intracellular, C-terminus.

Homology with other species: mouse - identical; human, rabbit - 15/17 residues identical.

Reactivity Confirmed: rat.

Identity of a peptide: confirmed by amino acid analysis.

Purity: IgG fraction purified on immobilized Protein A.

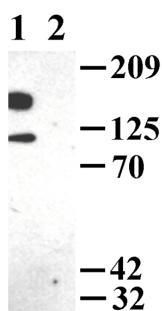
Sample Sizes: 50 μ l or 0.2 ml after reconstitution of the lyophilized powder.

Storage before Reconstitution: Lyophilized powder can be stored intact at room temperature for several weeks. For longer periods, it should be stored at -20°C.

Reconstitution: 50 μ l or 0.2 ml deionized water, depending on the sample size.

Antibody Concentration after Reconstitution: 1 mg/ml

Buffer after Reconstitution: phosphate buffered saline (PBS), pH 7.4, 1% BSA, 5% sucrose, 0.025% NaN₃.



Western blotting of rat brain membranes:

1. Anti-Kv2.1 (1:500)
2. Anti-Kv2.1, preincubated with the control peptide antigen.

Storage after Reconstitution: the reconstituted solution can be stored at 4°C for up to 2 weeks. For longer periods, small aliquots should be stored at -20°C or below. Avoid multiple freezing and thawing. The further dilutions should be made using a carrier protein such as BSA (1%). Centrifuge **all** antibody preparations before use (10000 \times g 5 min).

Control Antigen Included.

Control Antigen Storage before Reconstitution: Lyophilized powder can be stored intact at room temperature for several weeks. For longer periods, it should be stored at -20°C.

Control Antigen Reconstitution: 100 μ l water.

Control Antigen Storage after Reconstitution: -20°C.

Preadsorption Control: 1 μ g peptide per 1 μ g antibody.

Standard Quality Control of Each Lot: Western blotting.

Applications:

Western Blotting: Rat brain membranes (1:250-1:500)

Immunohistochemistry: Rat brain sections.

For research purposes only, not for human use.

Last Update: August 20, 2006.

References using this antibody:

1. Yamashita, T., *et al.* (2000) *Circulation* **101**, 2007.
2. Betancourt, L., *et al.* (2000) *J. Neurosci. Res.* **61**, 646.
3. Platoshyn, O., *et al.* (2001) *Am. J. Physiol. Lung Cell Mol Physiol.* **280**, L801.
4. Trepanier-Boulay, V., *et al.* *Circ Res* (2001) **89**, 437.
5. Reeve, H.L. *et al.* (2001) *J. Appl. Physiol.* **90**, 2249.
6. MacDonald, P.E. *et al.* (2002) *J. Biol. Chem.* **277**, 44938.
7. MacDonald, P.E. *et al.* (2002) *Diabetes* **51**, 443.
8. Tiran, Z. *et al.* (2003) *J. Biol. Chem.* **278**, 17509.
9. Ishikawa, T. *et al.* (2003) *J. Neurosci.* **23**, 10445.
10. Xia, F. *et al.* (2004) *J. Biol. Chem.* **279**, 24649.