

Anti-K_v11.1 (erg1)

(Voltage gated K⁺ channel K_v11.1, HERG, ether-a-go-go-related channel 1, Kcnh2)

Product #: APC-016

Current Lot #: AN-09, AN-10

Host: Rabbit.

Type: Polyclonal.

Epitope: Peptide (CY)EEL PAGAP ELPQD GPT, corresponding to residues 1122-1137 of rat K_v11.1 (Accession [O08962](#)).

Epitope location: Intracellular, C-terminal part.

Homology with other species: Mouse - identical; human, dog, rabbit - 14/16 residues identical.

Reactivity confirmed: Rat, human.

Identity of the peptide: Confirmed by amino acid analysis and mass-spectrography.

Purity: Affinity purified on immobilized antigen.

Sample Sizes: 50 µl or 0.2 ml after reconstitution of the lyophilized powder.

Storage before Reconstitution: Lyophilized powder can be stored intact at room temperature for several weeks. For longer periods, it should be stored at -20°C.

Reconstitution: 50 µl or 0.2 ml deionized water, depending on the sample size.

Antibody Concentration after Reconstitution: 0.8 mg/ml.

Buffer after Reconstitution: Phosphate buffered saline (PBS), pH 7.4, 1% BSA, 0.025% NaN₃.

Storage after Reconstitution: The reconstituted solution can be stored at 4°C for up to 2 weeks. For longer periods, small aliquots should be stored at -20°C or below. Avoid multiple freezing and thawing. The further dilutions should be made using a carrier protein such as BSA (1%). Centrifuge **all** antibody preparations before use (10000 × g 5 min).

Control Antigen Included.

Control Antigen Storage before Reconstitution: Lyophilized powder can be stored intact at room temperature for several weeks. For longer periods, it should be stored at -20°C.

Control Antigen Reconstitution: 100 µl water.

Control Antigen Storage after Reconstitution: -20 °C.

Preadsorption Control: 1 µg peptide per 1 µg antibody.

Standard Quality Control of Each Lot: Western blotting.

Applications:

Western Blotting: In HEK 293 cells stably expressing HERG channels.

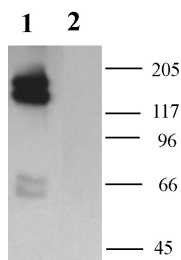
Immunohistochemistry: Mouse heart sections.

For research purposes only, not for human use.

Last Update: October 28, 2007.

References using this antibody:

1. Akbarali, H.I. *et al.* (1999) *Am. J. Physiol.* **277**, C1284.
2. Pond, A.L. *et al.* (2000) *J. Biol. Chem.* **275**, 5997.
3. Cayabyab, F.S. *et al.* (2002) *J. Biol. Chem.* **277**, 13673.
4. Wang, J. *et al.* (2003) *Am. J. Physiol. Heart Circ. Physiol.* **284**, 256.
5. Crociani, O. *et al.* (2003) *J. Biol. Chem.* **278**, 2947.
6. Papa, M. *et al.* (2003) *The J. of Comparative Neurology* **466**, 119.
7. Milnes, J.T. *et al.* (2003) *Br. J. Pharmacol.* **139**, 887.
8. Ficker, E. *et al.* (2003) *Circ. Res.* **92**, 87-100.
9. Wang, J. *et al.* (2004) *J. Biol. Chem.* **279**, 13289.
10. Bellocq, C. *et al.* (2004) *Mol. Pharmacology* **66**, 1093.



Western blotting of the lysate of HEK 293 cells, stably expressing HERG channels (1,2)

1. Anti-Erg1 antibody (1:200)

2. Anti-Erg1 antibody, preincubated with the control antigen.