

Anti-K_{ir}6.2

(Inward rectifier K⁺ channel Kir6.2, ATP-sensitive K⁺ channel Kir6.2, KCNJ11)

Product #: APC-020
Current Lot #: AN-02, AN-03
Host: Rabbit.
Type: Polyclonal.

Epitope: Peptide (C)SVAVAKAKPKFSIS, corresponding to amino acid residues 372-385 of rat Kir6.2 (Accession number [P70673](#)).

Epitope location: Intracellular, C-terminal part.

Homology with other species: Mouse – identical; human- 12/14 residues identical.

Specificity: The antibody is specific for Kir6.2, it does not cross react with Kir6.1.

Reactivity Confirmed: Rat.

Identity of a peptide: Confirmed by mass-spectrography and amino acid analysis.

Purity: Affinity purified on immobilized antigen.

Sample Sizes: 50 µl or 0.2 ml after reconstitution of the lyophilized powder.

Storage before Reconstitution: Lyophilized powder can be stored intact at room temperature for several weeks. For longer periods, it should be stored at -20°C.

Reconstitution: 50 µl or 0.2 ml deionized water, depending on the sample size.

Antibody Concentration after Reconstitution: 0.6 mg/ml.

Buffer after Reconstitution: phosphate buffered saline (PBS) pH 7.4, 1% BSA, 0.025% NaN₃.

Storage after Reconstitution: the reconstituted solution can be stored at 4°C for up to 2 weeks. For longer periods, small aliquots should be stored at -20°C or below. Avoid multiple freezing and thawing. The further dilutions should be made using a carrier protein such as BSA (1%). Centrifuge **all** antibody preparations before use (10000 × g 5 min).

Control Antigen Included.

Control Antigen Storage before Reconstitution: Lyophilized powder can be stored intact at room temperature for several weeks. For longer periods, it should be stored at -20°C.

Control Antigen Reconstitution: 100 µl water.

Control Antigen Storage after Reconstitution: -20 °C.

Preadsorption Control: 2 µg peptide per 1 µg antibody.

Standard Quality Control of Each Lot: Western blotting.

Applications:

Western Blotting: Rat pancreas lysate (1:200).

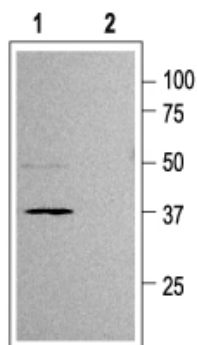
Immunohistochemistry: Rat pancreas sections.

For research purposes only, not for human use.

Last Update: July 21, 2005.

References using this antibody:

1. Xia, F. *et al.* (2004) *J. Biol. Chem.* **279**, 24685.



Western blotting of rat pancreas lysate:

1. Anti-K_{ir}6.2 (1:200).
2. Anti-K_{ir}6.2, preincubated with the control peptide antigen.