

Anti-K_v4.2

(*Shal1*, *RK5*, *Kcnd2*)

Product #: APC-023
Current Lot # AN-13, AN-14, AN-15
Host: Rabbit.
Type: Polyclonal.

Epitope: Peptide (C)SNQLQSSEDEPAFVSK, corresponding to amino acid residues 454-469 of rat Kv4.2 (Accession [Q63881](#)).

Epitope location: Intracellular, C-terminal part.

Homology with other species: Mouse, human - 15/16 residues identical.

Reactivity Confirmed: Rat.

Identity of a peptide: confirmed by amino acid analysis and mass-spectrography.

Purity: Affinity purified on immobilized peptide.

Sample Sizes: 50 µl or 0.2 ml after reconstitution of the lyophilized powder.

Storage before Reconstitution: Lyophilized powder can be stored intact at room temperature for several weeks. For longer periods, it should be stored at -20°C.

Reconstitution: 50 µl or 0.2 ml deionized water, depending on the sample size.

Antibody Concentration after Reconstitution: 0.6 mg/ml

Buffer after Reconstitution: phosphate buffered saline (PBS), pH 7.4, 1% BSA, 0.025% NaN₃.

Storage after Reconstitution: the reconstituted solution can be stored at 4°C for up to 2 weeks. For longer periods, small aliquots should be stored at -20°C or below. Avoid multiple freezing and thawing. The further dilutions should be made using a carrier protein such as BSA (1%). Centrifuge **all** antibody preparations before use (10000 × g 5 min).

Control Antigen Included.

Control Antigen Storage before Reconstitution: Lyophilized powder can be stored intact at room temperature for several weeks. For longer periods, it should be stored at -20°C.

Control Antigen Reconstitution: 100 µl water.

Control Antigen Storage after Reconstitution: -20 °C.

Preadsorption Control: 1 µg peptide per 1 µg antibody.

Standard Quality Control of Each Lot: Western blotting.

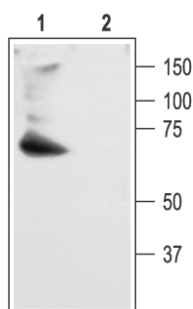
Applications:

Western Blotting: Rat brain membranes (1:200)

Immunohistochemistry: Rat brain sections.

For research purposes only, not for human use.

Last Update: December 2, 2008.



Western blotting of rat brain membranes:

1. Anti-K_v4.2 (1:200)
2. Anti- K_v4.2, preincubated with the control peptide antigen.

References using this antibody:

1. Anderson, A.E. *et al.* (2000) *J. Biol. Chem.* **275**, 5337.
2. Yamashita, T. *et al.* (2000) *Circulation* **101**, 2007.
3. Adams, J.P. *et al.* (2000) *J. Neurochem.* **75**, 2277.
4. Trepanier-Boulay, V., *et al.* *Circ Res* (2001) **89**, 437.
5. Adamson, C.L. *et al.* (2002) *J. Neuroscience* **22**, 1385.
6. Sanchez, D. *et al.* (2002) *J. Physiology* **542.2**, 369.
7. Amberg, G.C. *et al.* (2002) *J. Physiol.* **544.2**, 417.
8. Amberg, G.C. *et al.* (2002) *J. Physiol.* **544.2**, 403.
9. Li, G.R. *et al.* (2003) *Cardiovasc. Res.* **58**, 89.
10. Yamashita, T. *et al.* (2003) *Circulation* **107**, 1917.
11. Shimoni, Y. *et al.* (2003) *Am. J. Physiol. Heart Circ. Physiol.* **284**, H1168.
12. Shimoni, Y. *et al.* (2003) *J. Physiol.* **550.2**, 401.
13. Xu, Y. *et al.* (2005) *J. Physiol.* **562.3**, 745.
14. Suzuki, T. *et al.* (2005) *Am J Physiol. Endocrinol. Metab.* **288**, E335.
15. Chu, P-J. *et al.* (2006) *J. Biol. Chem.* **281**, 363.
16. Hu, H-J. *et al.* (2006) *Neuron* **50**, 89.
17. Jia, Y. *et al.* (2006) *Circ. Res.* **98**, 386.
18. Petkova-Kirova, P.S. *et al.* (2006) *Am. J. Physiol. Heart Circ. Physiol.* **290**, H2098.
19. Colinas, O. *et al.* (2006) *Am. J. Physiol. Heart Circ. Physiol.* **291**, H1978.
20. Xia, F. *et al.* (2007) *Endocrinol.* **148**, 2157.
21. Fernandez-Velasco, M. *et al.* (2007) *Am J Physiol Heart Circ Physiol* **293**, H238.
22. Sonner, P.M. and Stern, J.E. (2007) *J. Physiol.* **582**, 1219.