

## Anti-K<sub>Ca</sub>2.3 (SK3) (N-term)-ATTO-594

(Small conductance calcium-activated potassium channel, K<sub>Ca</sub>3, K<sub>cn</sub>3, SK<sub>Ca</sub>3)

**Product #:** APC-025-AR

**Current Lot ##:** AN-01

**Host:** Rabbit.

**Type:** Polyclonal.

**Epitope:** peptide DTSGHFHDSGVGDLDEDPKC, corresponding to amino acid residues 2-21 of human K<sub>Ca</sub>2.3 (Accession [Q9UGI6](#)).

**Putative Epitope Location:** Intracellular, N-terminus.

**Homology with other Species:** Rat, mouse, pig - identical.

**Reactivity Confirmed:** Rat, human.

**Identity of the Peptide:** confirmed by amino acid analysis.

**Purity:** affinity purified on immobilized antigen.

**Label:** ATTO-594. Maximum absorption 601 nm; Maximum fluorescence 627 nm. The fluorescence is excited most efficiently in the 580 - 615 nm range.

This label belongs to the class of Rhodamine dyes and can be used with fluorescent equipment typically optimized to detect Texas Red and Alexa-594.

**Sample Size:** 50 µl after reconstitution of the lyophilized powder.

**Storage before Reconstitution:** The antibody is shipped as a lyophilized powder at room temperature. Upon arrival it should be stored at -20°C.

**Reconstitution:** 50 µl of deionized water (DDW).

**Antibody Concentration after Reconstitution:** 0.6 mg/ml.

**Buffer after Reconstitution:** phosphate buffered saline (PBS), pH 7.4, 1% BSA, 0.025% NaN<sub>3</sub>.

**Storage after Reconstitution:** the reconstituted solution can be stored at 4°C for up to 2 weeks. For longer periods, small aliquots should be stored at -20°C or below. Avoid multiple freezing and thawing. The further dilutions should be made using a carrier protein such as BSA (1%). Centrifuge **all** antibody preparations before use (10000 × g 5 min).

**Control Antigen Included.**

**Control Antigen Storage before Reconstitution:** Lyophilized powder can be stored intact at room temperature for several weeks. For longer periods, it should be stored at -20°C.

**Control Antigen Reconstitution:** 100 µl water.

**Control Antigen Storage after Reconstitution:** -20 °C.

**Preadsorption Control:** 2 µg peptide per 1 µg antibody.

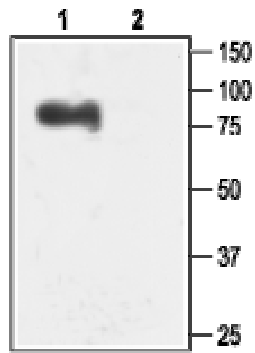
**Standard Quality Control of each Lot:** Western blot analysis (unlabeled antibody) and immunohistochemistry (labeled antibody).

**Applications:**

**Immunohistochemistry:** Rat brain sections (frozen), (1:25).

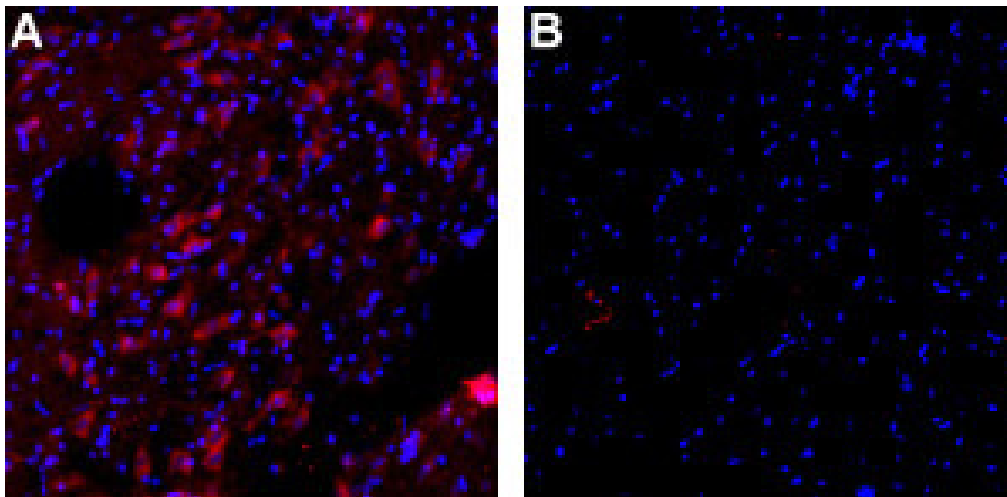
**For research purposes only, not for human use.**

**Last Update:** July 6, 2010.



Western blot analysis of rat brain membranes using unlabeled **Anti-K<sub>Ca</sub>2.3 (SK3) (N-term) antibody (#APC-025)**:

1. Anti- K<sub>Ca</sub>2.3 (SK3) (N-term) antibody (1:200).
2. Anti- K<sub>Ca</sub>2.3 (SK3) (N-term) antibody, preincubated with the control peptide antigen.



**Expression of the K<sub>Ca</sub>2.3 channel in rat brain.**

Immunohistochemical staining of rat brain perfusion-fixed frozen sections using **Anti-K<sub>Ca</sub>2.3 (SK3) (N-term)-ATTO-594 antibody (#APC-025-AR)**.

- A. K<sub>Ca</sub>2.3 channel (red) is visualized in the rat substantia nigra pars compacta.
- B. Pre-incubation of the Anti-K<sub>Ca</sub>2.3 (SK3) (N-term)-ATTO-594 antibody with the immunogen peptide, blocks specific staining.  
DAPI Nissl is used as the counterstain (blue).