

Anti-K_{Ca}2.3 (SK3) (N-term)

(Small conductance calcium-activated potassium channel, KCa3, Kcnn3, SKCa3)

Product #: APC-025

Current Lot ##: AN-04, AN-05

Host: Rabbit.

Type: Polyclonal.

Epitope: peptide DTSGHFHDSGVGLDEDPKC, corresponding to amino acid residues 2-21 of human K_{Ca}2.3 (Accession [Q9UGI6](#)).

Epitope Location: Intracellular, N-terminus.

Homology with other Species: rat, mouse, pig - identical.

Reactivity Confirmed: rat, human.

Identity of the peptide: confirmed by mass-spectrography and amino acid analysis.

Purity: affinity purified on immobilized antigen.

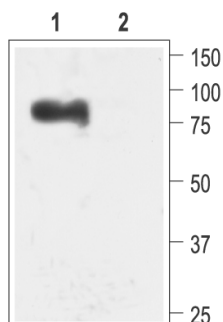
Sample Sizes: 50 µl or 0.2 ml after reconstitution of the lyophilized powder.

Storage before Reconstitution: Lyophilized powder can be stored intact at room temperature for several weeks. For longer periods, it should be stored at -20°C.

Reconstitution: 50 µl or 0.2 ml deionized water, depending on the sample size.

Antibody Concentration after Reconstitution: 0.6 mg/ml.

Buffer after Reconstitution: phosphate buffered saline (PBS), pH 7.4, 1% BSA, 0.025% NaN₃.



Western blot analysis of rat brain membranes:

1. Anti- K_{Ca}2.3 (SK3) (N-term) antibody (APC-025), (1:200).
2. Anti- K_{Ca}2.3 (SK3) (N-term) antibody, preincubated with the control peptide antigen.

Storage after Reconstitution: the reconstituted solution can be stored at 4°C for up to 2 weeks. For longer periods, small aliquots should be stored at -20°C or below. Avoid multiple freezing and thawing. The further dilutions should be made using a carrier protein such as BSA (1%). Centrifuge **all** antibody preparations before use (10000 × g 5 min).

Control Antigen Included.

Control Antigen Storage before Reconstitution: Lyophilized powder can be stored intact at room temperature for several weeks. For longer periods, it should be stored at -20°C.

Control Antigen Reconstitution: 100 µl water.

Control Antigen Storage after Reconstitution: -20 °C.

PreadSORption Control: 1 µg peptide per 1 µg antibody.

Standard Quality Control of each Lot: Western blotting.

Applications:

Western Blotting: Rat brain membranes (1:200).

Immunohistochemistry: Rat brain sections (see also 1,2)

For research purposes only, not for human use.

Last Update: July 8, 2010.

References using this antibody:

1. Tacconi, S. *et al.* (2001) *Neuroscience* **102**, 209.
2. Barfod, E.T. *et al.* (2001) *Am. J. Physiol.* **280**, C836.
3. Khanna, R. *et al.* (2001) *Am. J. Physiol.* **280**, C796.
4. Vanderwinden, J.M. *et al.* (2002) *Cell Tissue Res.* **310**, 349.
5. Tamarina, N.A. *et al.* (2003) *Diabetes* **52**, 2000.
6. Taylor, M.S. *et al.* (2003) *Circ. Res.* **93**, 124.
7. Kolski-Andreaco, A. *et al.* (2004) *J. Biol. Chem.* **279**, 6893.
8. Bond, C.T. *et al.* (2004) *J. Neurosci.* **24**, 5301.
9. Weston, A.H. *et al.* (2005) *Circ. Res.* **97**, 391.
10. McNeish, A.J. *et al.* (2006) *Stroke* **37**, 1277.
11. Moriguchi, S. *et al.* (2006) *Proc. Natl. Acad. Sci.* **103**, 10811.
12. Yamazaki, D. *et al.* (2006) *J. Biol. Chem.* **281**, 38430.
13. Sandow, S.L. *et al.* (2006) *J. Anat.* **209**, 689.
14. Absi, M. *et al.* (2007) *Br. J. Pharmacol.* **151**, 332.