

Anti-K_{ir}3.4 (GIRK4)

(G protein-activated inward rectifier K⁺ channel 4, KCNJ5)

Product #: APC-027
Current Lot #: AN-01, AN-02, AN-03
Host: Rabbit
Type: Polyclonal.

Epitope: RNAMNQDMEIGVT(C), corresponding to residues 6-18 of rat K_{ir}3.4 (Accession [P48548](#)).

Epitope location: Intracellular, N-terminus.

Homology with other species: Mouse, human, pig – identical.

Reactivity Confirmed: Rat.

Identity of a peptide: Confirmed by mass-spectrography and amino acid analysis.

Purity: Affinity purified on immobilized antigen.

Sample Sizes: 50 µl or 0.2 ml after reconstitution of the lyophilized powder.

Storage before Reconstitution: Lyophilized powder can be stored intact at room temperature for several weeks. For longer periods, it should be stored at -20°C.

Reconstitution: 50 µl or 0.2 ml deionized water, depending on the sample size.

Antibody Concentration after Reconstitution: 0.8 mg/ml.

Buffer after Reconstitution: Phosphate buffered saline (PBS) pH 7.4, 1% BSA, 0.025% NaN₃.

Storage after Reconstitution: the reconstituted solution can be stored at 4°C for up to 2 weeks. For longer periods, small aliquots should be stored at -20°C or below. Avoid multiple freezing and thawing. The further dilutions should be made using a carrier protein such as BSA (1%). Centrifuge **all** antibody preparations before use (10000 × g 5 min).

Control Antigen Included.

Control Antigen Storage before Reconstitution: Lyophilized powder can be stored intact at room temperature for several weeks. For longer periods, it should be stored at -20°C.

Control Antigen Reconstitution: 100 µl water.

Control Antigen Storage after Reconstitution: -20 °C.

Preadsorption Control: 1 µg peptide per 1 µg antibody.

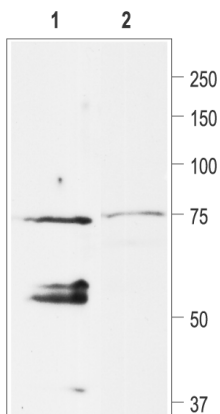
Standard Quality Control of Each Lot: Western blotting.

Applications:

Western Blotting: Rat heart membranes (1:200).

For research purposes only, not for human use.

Last Update: September 7, 2006.



Western blotting of rat heart membranes:

1. Anti- K_{ir}3.4 antibody (1:200).
2. Anti- K_{ir}3.4 antibody, preincubated with the control antigen.