

## Anti-s $\text{lo}\beta$ 2 (KCNMB2)

(Ca<sup>2+</sup>-activated K<sup>+</sup> channel  $\beta$  subunit 2, BK<sub>Ca</sub>  $\beta$  subunit 2)

**Product #:** APC-034  
**Current Lot #:** AN-01  
**Host:** Rabbit  
**Type:** Polyclonal.

**Epitope:** Peptide (C)RHDEKRNIYQKIRDHLLD, corresponding to amino acid residues 14-32 of human s $\text{lo}\beta$ 2 (Accession [Q9Y691](#)).

**Epitope location:** Intracellular, N-terminal part.

**Homology with other species:** Rat, dog- identical; mouse- 18 out of 19 residues identical.

**Reactivity Confirmed:** Rat.

**Identity of the peptide:** Confirmed by mass-spectrography and amino acid analysis.

**Purity:** Affinity purified on immobilized antigen.

**Sample Sizes:** 50  $\mu$ l or 0.2 ml after reconstitution of the lyophilized powder.

**Storage before Reconstitution:** Lyophilized powder can be stored intact at room temperature for several weeks. For longer periods, it should be stored at -20°C.

**Reconstitution:** 50  $\mu$ l or 0.2 ml deionized water, depending on the sample size.

**Antibody Concentration after Reconstitution:** 0.8 mg/ml.

**Buffer after Reconstitution:** Phosphate buffered saline (PBS), pH 7.4, 1% BSA, 0.025% NaN<sub>3</sub>.

**Storage after Reconstitution:** The reconstituted solution can be stored at 4°C for up to 2 weeks. For longer periods, small aliquots should be stored at -20°C or below. Avoid multiple freezing and thawing. Further dilutions should be made using a carrier protein such as BSA (1%). Centrifuge **all** antibody preparations before use (10000  $\times$  g 5 min).

**Control Antigen Included.**

**Control Antigen Storage before Reconstitution:** Lyophilized powder can be stored intact at room temperature for several weeks. For longer periods, it should be stored at -20°C.

**Control Antigen Reconstitution:** 100  $\mu$ l water.

**Control Antigen Storage after Reconstitution:** -20°C.

**PreadSORption Control:** 1  $\mu$ g peptide per 1  $\mu$ g antibody.

**Standard Quality Control of Each Lot:** Western blotting.

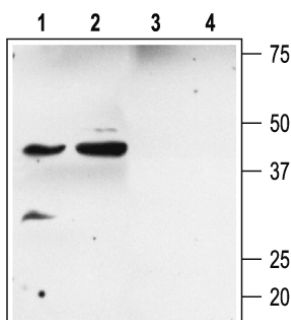
**Applications:**

**Western Blotting:** Rat kidney and heart membranes (1:200).

**Immunohistochemistry:** Rat brain sections.

**For research purposes only, not for human use.**

**Last Update:** May 5, 2006.



Western blotting of rat kidney (lanes 1 and 3) and rat heart (lanes 2 and 4) membranes:

1, 2. Anti-s $\text{lo}\beta$ 2 antibody (1:200).

3, 4. Anti-s $\text{lo}\beta$ 2 antibody, preincubated with the control peptide antigen.