

Anti-K_{ir}4.1

(K_{AB-2}, BIR10, BIRK1, Kir1.2, Kcnj10)

Product #: APC-035
Current Lot #: AN-05, AN-06
Host: Rabbit
Type: Polyclonal.

Epitope: peptide (C)KLEESLRQAEKEGSALSVR, corresponding to residues 356-375 of rat Kir4.1 (Accession [P49655](#)).

Epitope location: Intracellular, C-terminus.

Homology with other species: human, mouse - identical.

Reactivity Confirmed: rat.

Identity of a peptide: confirmed by mass-spectrography and amino acid analysis.

Purity: affinity purified on immobilized antigen.

Sample Sizes: 50 µl or 0.2 ml after reconstitution of the lyophilized powder.

Storage before Reconstitution: Lyophilized powder can be stored intact at room temperature for several weeks. For longer periods, it should be stored at -20°C.

Reconstitution: 50 µl or 0.2 ml deionized water, depending on the sample size.

Antibody Concentration after Reconstitution: 0.8 mg/ml.

Buffer after Reconstitution: phosphate buffered saline (PBS), pH 7.4, 1% BSA, 0.025% NaN₃.

Storage after Reconstitution: the reconstituted solution can be stored at 4°C for up to 2 weeks. For longer periods, small aliquots should be stored at -20°C or below. Avoid multiple freezing and thawing. The further dilutions should be made using a carrier protein such as BSA (1%). Centrifuge **all** antibody preparations before use (10000 × g 5 min).

Control Antigen Included.

Control Antigen Storage before Reconstitution: Lyophilized powder can be stored intact at room temperature for several weeks. For longer periods, it should be stored at -20°C.

Control Antigen Reconstitution: 100 µl water.

Control Antigen Storage after Reconstitution: -20 °C.

Preadsorption Control: 1 µg peptide per 1 µg antibody.

Standard Quality Control of Each Lot: Western blotting.

Applications:

Western Blotting: Rat brain membranes (1:400).

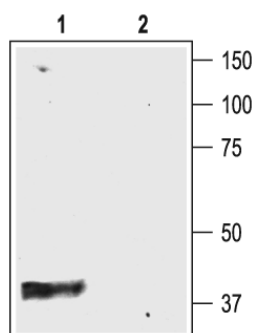
Immunohistochemistry: Rat brain sections.

For research purposes only, not for human use.

Last Update: September 22, 2009.

References using this antibody:

- Connors, N.C. and Kofuji, P. (2002) *J. Neurosci.* **22**, 4321.
- Saadoun, S. *et al.* (2003) *J. Clin. Pathol.* **56**, 972.
- Dalloz, C. *et al.* (2003) *Human Molecular Genetics* **12**, 1543.
- Ruttiger, L. *et al.* (2004) *PNAS* **101**, 12922.
- Da, T. *et al.* (2004) *Invest Ophthalmol. Vis. Sci.* **45**, 4477.
- Pannicke, T. *et al.* (2006) *Diabetes* **55**, 633.
- Neusch, C. *et al.* (2006) *J. Neurophysiol.* **95**, 1843.
- landiev, I. *et al.* (2006) *Invest Ophthalmol. Vis. Sci.* **47**, 2161.
- Mao, X. *et al.* (2006) *Eur. J. Neurosci.* **23**, 2929.
- Tiwari-Woodroof. S. *et al.* (2006) *Am. J. Physiol. Cell Physiol.* **291**, 687.
- Kaiser, M. *et al.* (2006) *J. Neurochem.* **99**, 900.
- Ivens, S. *et al.* (2007) *Brain* **130**, 535.
- Ruiz-Ederra, J. *et al.* (2007) *J. Biol. Chem.* **282**, 21866.
- Chen, J. and Nathans, J. (2007) *Dev. Cell* **13**, 325.
- Zhang, H. *et al.* (2008) *Mol. Cell. Neurosci.* **37**, 1.
- Vit, J-P. *et al.* (2008) *J. Neurosci.* **28**, 4861.
- Trowe, M-O. *et al.* (2008) *Development* **135**, 1725.
- landiev, I. *et al.* (2008) *Invest Ophthalmol. Vis. Sci.* **49**, 3559.
- Mustapha, M. *et al.* (2009) *J. Neurosci.* **29**, 1212.



Western blotting of rat brain membranes:

- Anti-Kir4.1 (1:400)
- Anti-Kir4.1, preincubated with the control peptide antigen.