

## Anti-*slo*β1 (KCNMB1)

(Ca<sup>2+</sup>-activated K<sup>+</sup> channel β subunit 1, BK<sub>Ca</sub> β subunit 1)

**Product #:** APC-036  
**Current Lot #:** AN-02  
**Host:** Rabbit  
**Type:** Polyclonal.

**Epitope:** Peptide KKLVMAQKRGETRALC, corresponding to amino acid residues 2-17 of rat *slo*β1 (Accession [P97678](#)).

**Epitope location:** Intracellular, N-terminal part.

**Homology with other species:** Mouse, human, dog, rabbit – identical.

**Reactivity Confirmed:** Rat.

**Identity of the peptide:** Confirmed by mass-spectrography and amino acid analysis.

**Purity:** Affinity purified on immobilized antigen.

**Sample Sizes:** 50 μl or 0.2 ml after reconstitution of the lyophilized powder.

**Storage before Reconstitution:** Lyophilized powder can be stored intact at room temperature for several weeks. For longer periods, it should be stored at -20°C.

**Reconstitution:** 50 μl or 0.2 ml deionized water, depending on the sample size.

**Antibody Concentration after Reconstitution:** 0.8 mg/ml.

**Buffer after Reconstitution:** Phosphate buffered saline (PBS), pH 7.4, 1% BSA, 0.025% NaN<sub>3</sub>.

**Storage after Reconstitution:** The reconstituted solution can be stored at 4°C for up to 2 weeks. For longer periods, small aliquots should be stored at -20°C or below. Avoid multiple freezing and thawing. Further dilutions should be made using a carrier protein such as BSA (1%). Centrifuge **all** antibody preparations before use (10000 × g 5 min).

**Control Antigen Included.**

**Control Antigen Storage before Reconstitution:** Lyophilized powder can be stored intact at room temperature for several weeks. For longer periods, it should be stored at -20°C.

**Control Antigen Reconstitution:** 100 μl water.

**Control Antigen Storage after Reconstitution:** -20 °C.

**PreadSORption Control:** 1 μg peptide per 1 μg antibody.

**Standard Quality Control of Each Lot:** Western blotting.

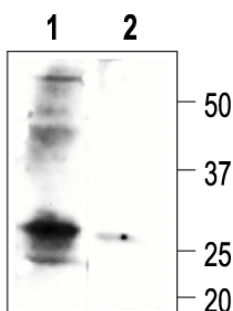
**Applications:**

**Western Blotting:** Rat smooth muscle lysate (1:200).

**Immunohistochemistry:** Rat smooth muscle samples.

**For research purposes only, not for human use.**

**Last Update:** December 24, 2006.



Western blotting of rat smooth muscle lysate:

1. Anti-*slo*β1 antibody (1:200)
2. Anti- *slo*β1 antibody, preincubated with the control peptide antigen.