

Anti-K_{ir}3.3 (GIRK3) (Kir3.3, Kcnj9)

Product #: APC-038
Current Lot # AN-02, AN-03
Host: Rabbit
Type: Polyclonal.

Epitope: (C)RLDAHLYWSIPSRLDEKV, corresponding to residues 344-361 of rat K_{ir}3.3 (Accession [Q63511](#))

Epitope location: Intracellular, C-terminus.

Homology with other species: Mouse, human - identical.

Reactivity Confirmed: Rat.

Identity of a peptide: Confirmed by mass-spectrography and amino acid analysis.

Purity: Affinity purified on immobilized antigen.

Sample Sizes: 50 µl or 0.2 ml after reconstitution of the lyophilized powder.

Storage before Reconstitution: Lyophilized powder can be stored intact at room temperature for several weeks. For longer periods, it should be stored at -20°C.

Reconstitution: 50 µl or 0.2 ml deionized water, depending on the sample size.

Antibody Concentration after Reconstitution: 0.75 mg/ml.

Buffer after Reconstitution: Phosphate buffered saline (PBS), pH 7.4, 1% BSA, 0.025% NaN₃.

Storage after Reconstitution: the reconstituted solution can be stored at 4°C for up to 2 weeks. For longer periods, small aliquots should be stored at -20°C or below. Avoid multiple freezing and thawing. The further dilutions should be made using a carrier protein such as BSA (1%). Centrifuge **all** antibody preparations before use (10000 × g 5 min).

Control Antigen Included.

Control Antigen Storage before Reconstitution: Lyophilized powder can be stored intact at room temperature for several weeks. For longer periods, it should be stored at -20°C.

Control Antigen Reconstitution: 100 µl water.

Control Antigen Storage after Reconstitution: -20 °C.

Preadsorption Control: 3 µg peptide per 1 µg antibody.

Standard Quality Control of Each Lot: Western blotting.

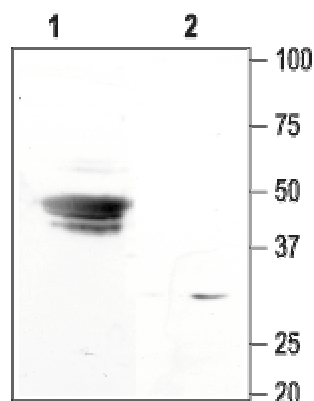
Applications:

Western Blotting: Rat brain membranes (1:200).

Immunohistochemistry: rat brain sections.

For research purposes only, not for human use.

Last Update: November 10, 2004.



Western blotting of rat brain membranes:

1. Anti-K_{ir}3.3 (GIRK3) antibody (1:200).
2. Anti-K_{ir}3.3 (GIRK3) antibody, preincubated with the control peptide antigen.