

## Anti-K<sub>Ca</sub>2.1 (SK1)

(Small conductance Ca<sup>2+</sup>-activated K<sup>+</sup> Channel 1, SK1, SKCa1, KCNN1)

**Product #:** APC-039

**Current Lot ##:** AN-03, AN-04, AN-05

**Host:** Rabbit.

**Type:** Polyclonal.

**Epitope:** Peptide (C)DRPGSGKPPTVSHRLGHRR corresponding to amino acid residues 75-93 of rat K<sub>Ca</sub>2.1 (Accession [P70606](#)).

**Epitope location:** Intracellular, N-terminal part.

**Homology with other species:** Mouse -17 out of 19 residues identical, human- 12 out of 19 residues identical.

**Reactivity Confirmed:** Rat.

**Identity of the peptide:** Confirmed by mass-spectrography and amino acid analysis.

**Purity:** Affinity purified on immobilized antigen.

**Sample Sizes:** 50 µl or 0.2 ml after reconstitution of the lyophilized powder.

**Storage before Reconstitution:** Lyophilized powder can be stored intact at room temperature for several weeks. For longer periods, it should be stored at -20°C.

**Reconstitution:** 50 µl or 0.2 ml deionized water, depending on the sample size.

**Antibody Concentration after Reconstitution:** 0.6 mg/ml.

**Buffer after Reconstitution:** Phosphate buffered saline (PBS), pH 7.4, 1% BSA, 0.025% NaN<sub>3</sub>.

**Storage after Reconstitution:** The reconstituted solution can be stored at 4°C for up to 2 weeks. For longer periods, small aliquots should be stored at -20°C or below. Avoid multiple freezing and thawing. Further dilutions should be made using a carrier protein such as BSA (1%). Centrifuge **all** antibody preparations before use (10000 × g 5 min).

**Control Antigen Storage before Reconstitution:** Lyophilized powder can be stored intact at room temperature for several weeks. For longer periods, it should be stored at -20°C.

**Control Antigen Reconstitution:** 100 µl water.

**Control Antigen Storage after Reconstitution:** -20 °C.

**Preadsorption Control:** 1 µg peptide per 1 µg antibody.

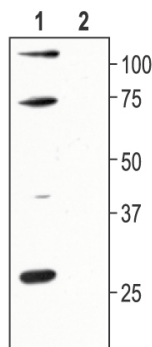
**Standard Quality Control of Each Lot:** Western blotting.

**Applications:**

**Western Blotting:** Rat brain cortex (1:200-1:400).

**For research purposes only, not for human use.**

**Last Update:** October 21, 2007.



Western blotting of rat brain cortex:

1. Anti- K<sub>Ca</sub>2.1 antibody (1:200)
2. Anti- K<sub>Ca</sub>2.1 antibody, preincubated with the control peptide antigen.