

Anti-K_{ir}2.2

(Inward rectifier potassium channel Kir2.2, IRK2, Kcnj12)

Product #: APC-042

Current Lot #: AN-03, AN-04

Host: Rabbit

Type: Polyclonal.

Epitope: Peptide (C)EVATDRDGRSPQPEHDFDR, corresponding to amino acid residues 391-409 of rat Kir2.2 (Accession [P52188](#)).

Epitope location: Intracellular, C-terminal part.

Homology with other species: mouse identical or 16/19 residues identical; human 13/19 residues identical.

Reactivity Confirmed: rat.

Identity of a peptide: confirmed by mass-spectrography and amino acid analysis.

Purity: affinity purified on immobilized antigen.

Sample Sizes: 50 µl or 0.2 ml after reconstitution of the lyophilized powder.

Storage before Reconstitution: Lyophilized powder can be stored intact at room temperature for several weeks. For longer periods, it should be stored at -20°C.

Reconstitution: 50 µl or 0.2 ml deionized water, depending on the sample size.

Antibody Concentration after Reconstitution: 0.39 mg/ml.

Buffer after Reconstitution: phosphate buffered saline (PBS) pH 7.4, 1% BSA, 0.025% NaN₃.

Storage after Reconstitution: the reconstituted solution can be stored at 4°C for up to 2 weeks. For longer periods, small aliquots should be stored at -20°C or below. Avoid multiple freezing and thawing. The further dilutions should be made using a carrier protein such as BSA (1%). Centrifuge **all** antibody preparations before use (10000 × g 5 min).

Control Antigen Included: 40 µg of lyophilized peptide.

Control Antigen Storage before Reconstitution: Lyophilized powder can be stored intact at room temperature for several weeks. For longer periods, it should be stored at -20°C.

Control Antigen Reconstitution: 100 µl water.

Control Antigen Storage after Reconstitution: -20 °C.

Preadsorption Control: 1 µg peptide per 1 µg antibody.

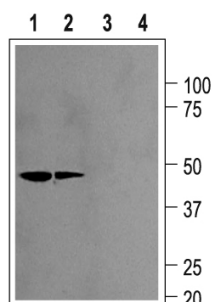
Standard Quality Control of Each Lot: Western blotting.

Applications:

Western Blotting: Rat brain and kidney membranes (1:200).

For research purposes only, not for human use.

Last Update: August 12, 2007.



Western blotting of rat kidney (1,3) and brain (2,4) membranes:
1,2. Anti-K_{ir}2.2 (1:200).
3,4. Anti-K_{ir}2.2, preincubated with the control peptide antigen.