



Headquarters: Alomone Labs Ltd.
Har Hotzvim Hi-Tech Park P.O. Box 4287, Jerusalem 91042, Israel.
Tel: +972-2-587 2202 Fax: +972-2-587 1101 or +972-2-642 6975
email: techsupport@alomone.com http://www.alomone.com

Molecular Tools for the Life Science Community

Certificate of Analysis

ANTI-K_v7.2 (KCNQ2)

(Voltage-gated potassium channel QKT subfamily member 2)

Product #: APC-050

Current Lot #: AN-01, AN-02

Host: Rabbit

Type: Polyclonal.

Epitope: peptide (C)RGPTITDKDRTKGPAE, corresponding to amino acid residues 578-593 of rat KCNQ2 (Accession number [O88943](#)).

Epitope location: Intracellular, C-terminal domain.

Homology with other species: mouse – identical; human- 15/16 residues identical.

Specificity: The antibody is specific for KCNQ2; it does not cross react with KCNQ3 or other QKT proteins. There are at least 9 recognized splice variants of rat KCNQ2. This antibody recognizes all except splice variants B and G.

Reactivity Confirmed: rat.

Identity of a peptide: confirmed by mass-spectrography and amino acid analysis.

Purity: affinity purified on immobilized antigen.

Sample Sizes: 50 µl or 0.2 ml after reconstitution of the lyophilized powder.

Storage before Reconstitution: Lyophilized powder can be stored intact at room temperature for several weeks. For longer periods, it should be stored at -20°C.

Reconstitution: 50 µl or 0.2 ml deionized water, depending on the sample size.

Antibody Concentration after Reconstitution: 0.8 mg/ml.

Buffer after Reconstitution: phosphate buffered saline (PBS), pH 7.4, 1% BSA, 0.025% NaN₃.

Storage after Reconstitution: the reconstituted solution can be stored at 4°C for up to 2 weeks. For longer periods, small aliquots should be stored at -20°C or below. Avoid multiple freezing and thawing. The further dilutions should be made using a carrier protein such as BSA (1%). Centrifuge **all** antibody preparations before use (10000 × g 5 min).

Control Antigen Included: 40 µg of lyophilized peptide.

Control Antigen Storage before Reconstitution: Lyophilized powder can be stored intact at room temperature for several weeks. For longer periods, it should be stored at -20°C.

Control Antigen Reconstitution: 100 µl water.

Control Antigen Storage after Reconstitution: -20 °C.

PreadSORption Control: 1 µg peptide per 1 µg antibody.

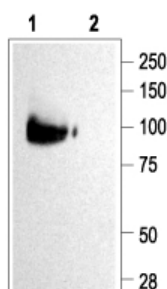
Standard Quality Control of Each Lot: Western blotting.

Applications:

Western Blotting: KCNQ2 transfected HEK-293 cells (1:200).

For research purposes only, not for human use.

Last Update: November 4, 2004.



Western blotting of KCNQ2 transfected HEK-293 cells:

1. Anti-KCNQ2 (1:200)
2. Anti-KCNQ2, preincubated with the control peptide antigen.