

## Anti-KCNE2 (MiRP1)

(MinK-related peptide 1)

**Product #:** APC-054  
**Current Lot #:** AN-01, AN-02, AN-03  
**Host:** Rabbit.  
**Type:** Polyclonal.

**Epitope:** Peptide (C)IVEDWQQKYRSQILHLEDSK, corresponding to residues 88-107 of rat MiRP1 (Accession [Q9WTW0](#)).

**Epitope location:** Intracellular, C-terminal part.

**Homology with other species:** mouse, human, rabbit - respectively, 18/20, 16/20, and 15/20 residues identical.

**Reactivity Confirmed:** Rat, mouse.

**Identity of a peptide:** Confirmed by mass-spectrography and amino acid analysis.

**Purity:** Affinity purified on immobilized antigen.

**Sample Sizes:** 50  $\mu$ l or 0.2 ml after reconstitution of the lyophilized powder.

**Storage before Reconstitution:** Lyophilized powder can be stored intact at room temperature for several weeks. For longer periods, it should be stored at -20°C.

**Reconstitution:** 50  $\mu$ l or 0.2 ml deionized water, depending on the sample size.

**Antibody Concentration after Reconstitution:** 0.6 mg/ml.

**Buffer after Reconstitution:** Phosphate buffered saline (PBS), pH 7.4, 1% BSA, 0.025% NaN<sub>3</sub>.

**Storage after Reconstitution:** the reconstituted solution can be stored at 4°C for up to 2 weeks. For longer periods, small aliquots should be stored at -20°C or below. Avoid multiple freezing and thawing. The further dilutions should be made using a carrier protein such as BSA (1%). Centrifuge all antibody preparations before use (10000  $\times$  g 5 min).

**Control Antigen Included.**

**Control Antigen Storage before Reconstitution:** Lyophilized powder can be stored intact at room temperature for several weeks. For longer periods, it should be stored at -20°C.

**Control Antigen Reconstitution:** 100  $\mu$ l water.

**Control Antigen Storage after Reconstitution:** -20 °C.

**PreadSORption Control:** 1  $\mu$ g peptide per 1  $\mu$ g antibody.

**Standard Quality Control of Each Lot:** Western blotting.

**Applications:**

**Western Blotting:** Rat heart membranes (1:200).

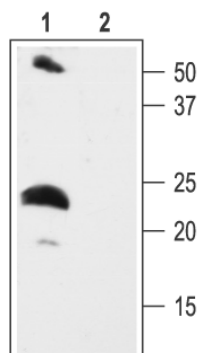
**Immunohistochemistry:** Mouse heart.

**For research purposes only, not for human use.**

**Last Update:** June 17, 2007.

**References using this antibody:**

- Jiang, M. *et al.* (2004) *Circulation* **109**, 1783.
- Qu, J. *et al.* (2004) *J. Biol. Chem.* **279**, 43497.



Western blotting of rat heart membranes:

- Anti-KCNE2 (MiRP1) antibody (#APC-054), (1:200).**
- Anti-KCNE2 (MiRP1) antibody, preincubated with the control peptide antigen.