

## Anti-Kir4.2

(Kir1.3, Kcnj15)

**Product #:** APC-058

**Current Lot #:** AN-01

**Host:** Rabbit.

**Type:** Polyclonal.

**Epitope:** peptide (C)EKQK LEEQY RQEDQ REREL R, corresponding to residues 347-366 of mouse Kir4.2 (Accession [O88932](#))

**Epitope location:** Intracellular, C-terminal part.

**Homology with other species:** guinea pig, human - respectively, 19/20 and 18/20 residues identical.

**Reactivity Confirmed:** rat.

**Identity of a peptide:** confirmed by mass-spectrography and amino acid analysis.

**Purity:** affinity purified on immobilized antigen.

**Sample Sizes:** 50  $\mu$ l or 0.2 ml after reconstitution of the lyophilized powder.

**Storage before Reconstitution:** Lyophilized powder can be stored intact at room temperature for several weeks. For longer periods, it should be stored at -20°C.

**Reconstitution:** 50  $\mu$ l or 0.2 ml deionized water, depending on the sample size.

**Antibody Concentration after Reconstitution:** 0.6 mg/ml.

**Buffer after Reconstitution:** phosphate buffered saline (PBS), pH 7.4, 1% BSA, 5% sucrose, 0.025% NaN<sub>3</sub>.

**Storage after Reconstitution:** the reconstituted solution can be stored at 4°C for up to 2 weeks. For longer periods, small aliquots should be stored at -20°C or below. Avoid multiple freezing and thawing. The further dilutions should be made using a carrier protein such as BSA (1%). Centrifuge **all** antibody preparations before use (10000  $\times$  g 5 min).

**Control Antigen Included:** 40  $\mu$ g of lyophilized peptide.

**Control Antigen Storage before Reconstitution:** Lyophilized powder can be stored intact at room temperature for several weeks. For longer periods, it should be stored at -20°C.

**Control Antigen Reconstitution:** 100  $\mu$ l water.

**Control Antigen Storage after Reconstitution:** -20 °C.

**PreadSORption Control:** 1  $\mu$ g peptide per 1  $\mu$ g antibody.

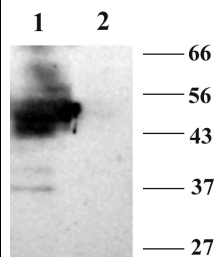
**Standard Quality Control of Each Lot:** Western blotting.

**Applications:**

**Western Blotting:** Rat kidney membranes (1:200).

**For research purposes only, not for human use.**

**Last Update:** May 14, 2001.



Western blotting of rat kidney membranes:

1. Anti-Kir4.2, 1:200
2. Anti-Kir4.2, preincubated with the control peptide antigen.