

Anti-slo β 4 (KCNMB4)

(Ca²⁺-activated K⁺ channel β subunit 4, BK_{Ca} β subunit 4)

Product #: APC-061
Current Lot #: AN-03
Host: Rabbit
Type: Polyclonal.

Epitope: Peptide AKLRVSYEYTEAEDKS(C), corresponding to amino acid residues 2-17 of rat slo β 4 (Accession [Q9ESK8](#)).

Epitope location: Intracellular, N-terminal part.

Homology with other species: Mouse, human –identical.

Reactivity Confirmed: Rat.

Identity of the peptide: Confirmed by mass-spectrography and amino acid analysis.

Purity: Affinity purified on immobilized antigen.

Sample Sizes: 50 μ l or 0.2 ml after reconstitution of the lyophilized powder.

Storage before Reconstitution: Lyophilized powder can be stored intact at room temperature for several weeks. For longer periods, it should be stored at -20°C.

Reconstitution: 50 μ l or 0.2 ml deionized water, depending on the sample size.

Antibody Concentration after Reconstitution: 0.8 mg/ml.

Buffer after Reconstitution: Phosphate buffered saline (PBS), pH 7.4, 1% BSA, 0.025% NaN₃.

Storage after Reconstitution: The reconstituted solution can be stored at 4°C for up to 2 weeks. For longer periods, small aliquots should be stored at -20°C or below. Avoid multiple freezing and thawing. Further dilutions should be made using a carrier protein such as BSA (1%). Centrifuge **all** antibody preparations before use (10000 \times g 5 min).

Control Antigen Included.

Control Antigen Storage before Reconstitution: Lyophilized powder can be stored intact at room temperature for several weeks. For longer periods, it should be stored at -20°C.

Control Antigen Reconstitution: 100 μ l water.

Control Antigen Storage after Reconstitution: -20°C.

Preadsorption Control: 1 μ g peptide per 1 μ g antibody.

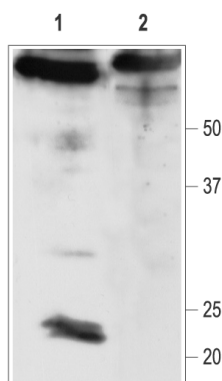
Standard Quality Control of Each Lot: Western blotting.

Applications:

Western Blotting: Rat brain membranes (1:200).

For research purposes only, not for human use.

Last Update: December 22, 2005.



Western blotting of rat brain membranes:

1. Anti-slo β 4 antibody (1:200)
2. Anti-slo β 4 antibody, preincubated with the control peptide antigen.