

Anti-K_{Ca}3.1

(Intermediate conductance Ca²⁺-activated K⁺ Channel4, IK_{Ca}1, SK4, KCNN4)

Product #: APC-064
Current Lot #: AN-03.
Host: Rabbit.
Type: Polyclonal.

Epitope: Peptide RQVRLKHKRLREQV(C), corresponding to amino acid residues 350-363 of rat K_{Ca}3.1 (Accession [Q9QYW1](#)).

Epitope location: Intracellular, C-terminal part.

Homology with other species: Mouse, human, pig-identical.

Reactivity Confirmed: Rat, human.

Identity of the peptide: Confirmed by mass-spectrography and amino acid analysis.

Purity: Affinity purified on immobilized antigen.

Sample Sizes: 50 µl or 0.2 ml after reconstitution of the lyophilized powder.

Storage before Reconstitution: Lyophilized powder can be stored intact at room temperature for several weeks. For longer periods, it should be stored at -20°C.

Reconstitution: 50 µl or 0.2 ml deionized water, depending on the sample size.

Antibody Concentration after Reconstitution: 0.8 mg/ml.

Buffer after Reconstitution: Phosphate buffered saline (PBS), pH 7.4, 1% BSA, 0.025% NaN₃.

Storage after Reconstitution: the reconstituted solution can be stored at 4°C for up to 2 weeks. For longer periods, small aliquots should be stored at -20°C or below. Avoid multiple freezing and thawing. Further dilutions should be made using a carrier protein such as BSA (1%). Centrifuge all antibody preparations before use (10000 × g 5 min).

Control Antigen Included.

Control Antigen Storage before Reconstitution: Lyophilized powder can be stored intact at room temperature for several weeks. For longer periods, it should be stored at -20°C.

Control Antigen Reconstitution: 100 µl water.

Control Antigen Storage after Reconstitution: -20 °C.

Preadorption Control: 2 µg peptide per 1 µg antibody.

Standard Quality Control of Each Lot: Western blotting.

Applications:

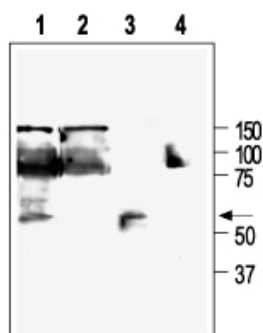
Western Blotting: K_{Ca}3.1 transfected HEK-293 and K562 (Human chronic myelogenous leukemia) cells (1:300).

For research purposes only, not for human use.

Last Update: May 21, 2008.

References using this antibody:

1. McNeish, A.J. *et al.* (2006) *Stroke* **37**, 1277.
2. Ubels, J.L. *et al.* (2006) *Invest. Ophthalmol. Vis. Sci.* **47**, 1876.
3. Dong, H. *et al.* (2006) *Am. J. Physiol. Gastrointest. Liver Physiol.* **291**, G1120.
4. Srivastava, S. *et al.* (2006) *Mol. Cell* **24**, 666.
5. Sandow, S.L. *et al.* (2006) *J. Anat.* **209**, 689.
6. Kaushal, V. *et al.* (2007) *J. Neurosci.* **27**, 234.



Western blotting of HEK-293-K_{Ca}3.1 (1, 2) and K562 (3, 4) cells:
1, 3. Anti- K_{Ca}3.1 antibody (1:200).
2, 4. Anti- K_{Ca}3.1 antibody, preincubated with the control peptide antigen.