



Headquarters: Alomone Labs Ltd.
Har Hotzvim Hi-Tech Park P.O. Box 4287, Jerusalem 91042, Israel.
Tel: +972-2-587 2202 Fax: +972-2-587 1101 or +972-2-642 6975
email: techsupport@alomone.com http://www.alomone.com

Molecular Tools for the Life Science Community

Certificate of Analysis

Anti-K_v1.3 (extracellular) (Voltage-gated potassium channel Kv1.3, Kcna3)

Product #: APC-101

Current Lot #: AN-06, AN-07, AN-08, AN-09

Host: Rabbit.

Type: Polyclonal.

Epitope: Peptide KDYPASTSQDSFEA(C) corresponding to residues 263-276 of human Kv1.3 (Accession [P22001](#)).

Epitope location: Extracellular, between S1 and S2 domains.

Homology with other species: Rat, mouse – 12 out of 14 residues identical.

Reactivity confirmed: Rat, Human.

Identity of a peptide: confirmed by mass-spectrography and amino acid analysis.

Purity: affinity purified on immobilized antigen.

Sample sizes: 50 µl or 0.2 ml after reconstitution of the lyophilized powder.

Storage before reconstitution: Lyophilized powder can be stored intact at room temperature for several weeks. For longer periods, it should be stored at -20°C.

Reconstitution: 50 µl or 0.2 ml deionized water, depending on the sample size.

Antibody concentration after reconstitution: 0.8 mg/ml.

Buffer after reconstitution: phosphate buffered saline (PBS), pH 7.4, 1% BSA, 0.05% NaN₃.

Storage after reconstitution: the reconstituted solution can be stored at 4°C for up to 2 weeks. For longer periods, small aliquots should be stored at -20°C or below. Avoid multiple freezing and thawing. The further dilutions should be made using a carrier protein such as BSA (1%). Centrifuge **all** antibody preparations before use (10000 × g 5 min).

Control antigen reconstitution: 100 µl water.

Control antigen storage after reconstitution: -20 °C.

Preadsorption Control: 5 µg peptide per 1 µg antibody.

Standard quality control of each Lot: Western blotting.

Applications:

Western Blotting: Rat brain membranes and human Jurkat T lymphocytes (1:200-1:500).

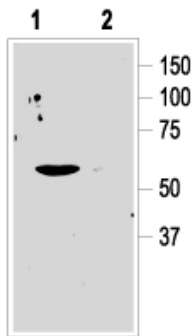
Indirect Flow Cytometry: 0.5-5µg antibody / 1x10⁶cells.

For research purposes only, not for human use.

Last Update: September 7, 2009.

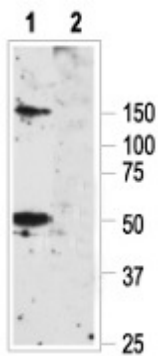
References using this antibody:

1. Beeton, C. *et al.* (2006) *Proc. Natl. Acad. Sci. USA* **103**, 17414.
2. Cangiano, L. *et al.* (2007) *PLoS ONE* **2**, 1327.
3. Vicente, R. *et al.* (2008) *J. Biol. Chem.* **283**, 8756.



Western blotting of human Jurkat T cells:

1. Anti-Kv1.3 (extracellular) antibody (1:200)
2. Anti-Kv1.3 (extracellular) antibody, preincubated with the control peptide antigen



Western blotting of rat brain membranes:

1. Anti-Kv1.3 (extracellular) antibody (1:500)
2. Anti-Kv1.3 (extracellular) antibody, preincubated with the control peptide antigen