



Headquarters: Alomone Labs Ltd.
Har Hotzvim Hi-Tech Park P.O. Box 4287, Jerusalem 91042, Israel.
Tel: +972-2-587 2202 Fax: +972-2-587 1101 or +972-2-642 6975
email: techsupport@alomone.com http://www.alomone.com

Molecular Tools for the Life Science Community

Certificate of Analysis

Anti-K_v10.1 (EAG-1) (Ether-a-go-go K⁺ channel 1; KCNH1)

Product #: APC-104
Current Lot #: AN-03, AN-04
Host: Rabbit
Type: Polyclonal.

Epitope: GDPAKRKGWARFKDAC, corresponding to residues 802-817 of rat K_v10.1 (Accession [Q63472](#))

Epitope location: Intracellular, C-terminus.

Homology with other species: Mouse – identical, human-14 out of 16 residues identical.

Reactivity Confirmed: Rat, human.

Identity of a peptide: Confirmed by mass-spectrography and amino acid analysis.

Purity: Affinity purified on immobilized antigen.

Sample Sizes: 50 µl or 0.2 ml after reconstitution of the lyophilized powder.

Storage before Reconstitution: Lyophilized powder can be stored intact at room temperature for several weeks. For longer periods, it should be stored at -20°C.

Reconstitution: 50 µl or 0.2 ml deionized water, depending on the sample size.

Antibody Concentration after Reconstitution: 0.6 mg/ml.

Buffer after Reconstitution: Phosphate buffered saline (PBS) pH 7.4, 1% BSA, 0.025% NaN₃.

Storage after Reconstitution: the reconstituted solution can be stored at 4°C for up to 2 weeks. For longer periods, small aliquots should be stored at -20°C or below. Avoid multiple freezing and thawing. The further dilutions should be made using a carrier protein such as BSA (1%). Centrifuge **all** antibody preparations before use (10000 × g 5 min).

Control Antigen Included.

Control Antigen Storage before Reconstitution: Lyophilized powder can be stored intact at room temperature for several weeks. For longer periods, it should be stored at -20°C.

Control Antigen Reconstitution: 100 µl water.

Control Antigen Storage after Reconstitution: -20 °C.

Preadsorption Control: 1 µg peptide per 1 µg antibody.

Standard Quality Control of Each Lot: Western blotting.

Applications:

Western Blotting: Rat brain lysate and transfected cells HEK-K_v10.1 (1:200).

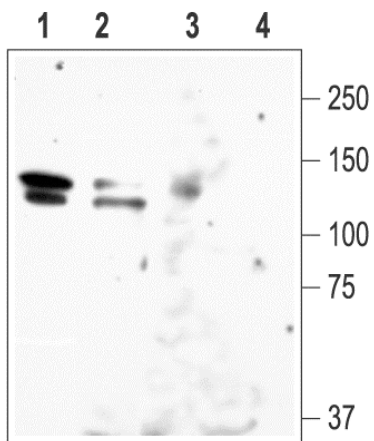
Immunocytochemistry: Paraformaldehyde-fixed human MDA-468 mamary gland adenocarcinoma cells (1:200).

For research purposes only, not for human use.

Last Update: December 2, 2008.

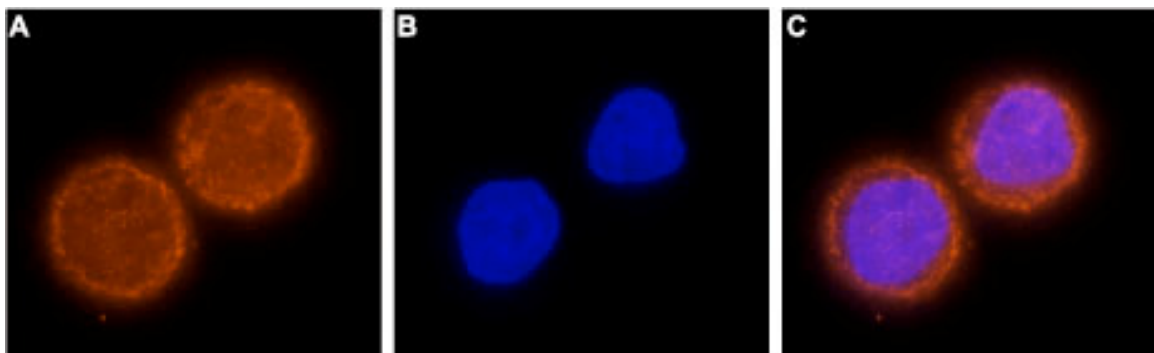
References using this antibody:

1. Cherubini, A. *et al.* (2005) *Mol. Biol. Cell* **16**, 2972.
2. Spitzner, M. *et al.* (2007) *FASEB J.* **21**, 35.
3. Ousingsawat, J. *et al.* (2007) *Clin. Cancer Res.* **13**, 824.
4. Spitzner, M. *et al.* (2008) *J. Biol. Chem.* **283**, 7421.



Western blotting of rat brain lysate (1 and 3) and HEK-Kv10.1 (2 and 4):
 1 and 2. **Anti- Kv10.1** antibody (#APC-104) (1:200).
 3 and 4. Anti- Kv10.1 antibody, preincubated with the control antigen.

Immunocytochemical staining of Kv10.1 in human MDA-468 mammary gland adenocarcinoma cells.



- A. Paraformaldehyde fixed and permeabilized human MDA-468 mammary gland adenocarcinoma cells were stained with **Anti- Kv10.1** antibody (#APC-104) (1:200) followed by goat-anti-rabbit-Alexa-555 secondary antibody (red staining).
- B. Nuclei were visualized with the cell permeable dye Hoechst 33342 (blue staining).
- C. Merge of (A) and (B).