



**Headquarters:** Alomone Labs Ltd.  
Har Hotzvim Hi-Tech Park P.O. Box 4287, Jerusalem 91042, Israel.  
Tel: +972-2-587 2202 Fax: +972-2-587 1101 or +972-2-642 6975  
email: techsupport@alomone.com http://www.alomone.com

Molecular Tools for the Life Science Community

## Certificate of Analysis

### Anti-K<sub>ir</sub>6.1

(ATP-sensitive inward rectifier K<sup>+</sup> channel K<sub>ir</sub>6.1, KCNJ8)

**Product #:** APC-105

**Current Lot #:** AN-01, AN-02

**Host:** Rabbit.

**Type:** Polyclonal.

**Epitope:** Peptide (C)KRNSMRRNNSMRRSN, corresponding to amino acid residues 382-396 of rat K<sub>ir</sub>6.1 (Accession number [Q63664](#)).

**Epitope location:** Intracellular, C-terminal part.

**Homology with other species:** Mouse, human, pig, rabbit – 15/16 residues identical.

**Specificity:** The antibody is specific for K<sub>ir</sub>6.1, it does not cross react with K<sub>ir</sub>6.2.

**Reactivity Confirmed:** Rat.

**Identity of a peptide:** Confirmed by mass-spectrography and amino acid analysis.

**Purity:** Affinity purified on immobilized antigen.

**Sample Sizes:** 50 µl or 0.2 ml after reconstitution of the lyophilized powder.

**Storage before Reconstitution:** Lyophilized powder can be stored intact at room temperature for several weeks. For longer periods, it should be stored at -20°C.

**Reconstitution:** 50 µl or 0.2 ml deionized water, depending on the sample size.

**Antibody Concentration after Reconstitution:** 0.8 mg/ml.

**Buffer after Reconstitution:** phosphate buffered saline (PBS) pH 7.4, 1% BSA, 0.025% NaN<sub>3</sub>.

**Storage after Reconstitution:** the reconstituted solution can be stored at 4°C for up to 2 weeks. For longer periods, small aliquots should be stored at -20°C or below. Avoid multiple freezing and thawing. The further dilutions should be made using a carrier protein such as BSA (1%). Centrifuge all antibody preparations before use (10000 × g 5 min).

**Control Antigen Included.**

**Control Antigen Storage before Reconstitution:** Lyophilized powder can be stored intact at room temperature for several weeks. For longer periods, it should be stored at -20°C.

**Control Antigen Reconstitution:** 100 µl water.

**Control Antigen Storage after Reconstitution:** -20 °C.

**PreadSORption Control:** 1 µg peptide per 1 µg antibody.

**Standard Quality Control of Each Lot:** Western blotting.

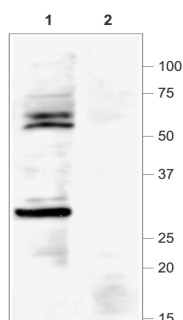
**Applications:**

**Western Blotting:** Rat heart membranes and rat cortex lysate (1:200).

**Immunohistochemistry:** Rat uterus sections.

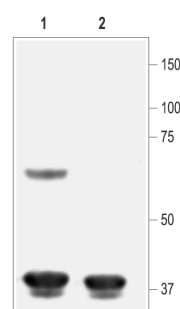
**For research purposes only, not for human use.**

**Last Update:** August 9, 2006.



Western blotting of rat heart membranes:

1. Anti-K<sub>ir</sub>6.1 (1:200).
2. Anti-K<sub>ir</sub>6.1 (1:200), preincubated with the control peptide antigen.



Western blotting of rat cortex lysate:

1. Anti-K<sub>ir</sub>6.1 (1:200).
2. Anti-K<sub>ir</sub>6.1 (1:200), preincubated with the control peptide antigen.