

Anti-hKv11.1 (HERG)- extracellular- FITC

(Voltage gated K⁺ channel subfamily H member 2, KCNH2, ether-a-go-go-related channel 1)

Product #: APC-109-F
Current Lot #: AN-02, AN-03
Host: Rabbit.
Type: Polyclonal.

Epitope: Peptide AFLLKETEEGPPATEC corresponding to residues 430-445 of human Kv11.1 (HERG) (Accession [Q12809](#)).

Epitope location: Extracellular, between S1 and S2 domains.

Homology with other species: Rat, mouse – 11 out of 16 residues identical; dog, rabbit-15 out of 16 residues identical.

Reactivity confirmed: Human.

Identity of the peptide: Confirmed by mass-spectrography and amino acid analysis.

Purity: Affinity purified on immobilized antigen.

Label: Fluorescein isothiocyanate (FITC).

Sample size: 50 µl after reconstitution of the lyophilized powder.

Storage before reconstitution: Lyophilized powder can be stored intact at room temperature for several weeks. For longer periods, it should be stored at -20°C.

Reconstitution: 50 µl of deionized water.

Antibody concentration after reconstitution: 1 mg/ml.

Buffer after reconstitution: phosphate buffered saline (PBS), pH 7.4, 1% BSA, 0.05% NaN₃.

Storage after reconstitution: the reconstituted solution can be stored at 4°C for up to 2 weeks. For longer periods, small aliquots should be stored at -20°C or below. Avoid multiple freezing and thawing. The further dilutions should be made using a carrier protein such as BSA (1%). Centrifuge **all** antibody preparations before use (10000 × g 5 min).

Standard quality control of each Lot: Flow cytometry analysis.

Applications:

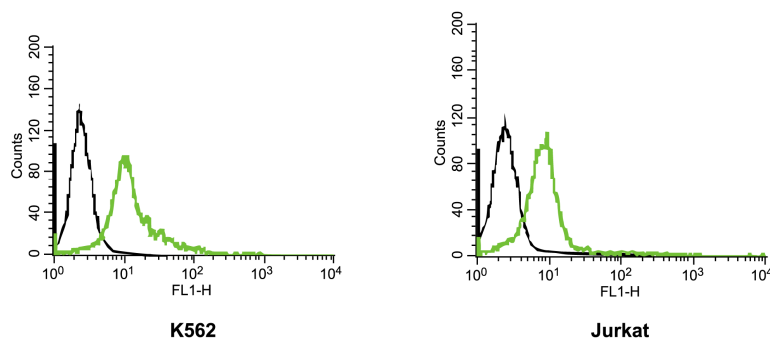
Flow Cytometry: Intact live human cells (2-10µg antibody / 1x10⁶cells).

Immunocytochemistry: Intact live HEK-Kv11.1 transfected cells (1:25).

For research purposes only, not for human use.

Last Update: October 12, 2009.

FACS analysis of live intact K562 (human chronic myelogenous leukemia) and Jurkat (human T cell leukemia) cells:



— Unstained cells
 — Cells + Anti- Kv11.1-extracellular -FITC