



Headquarters: Alomone Labs Ltd.
Har Hotzvim Hi-Tech Park P.O. Box 4287, Jerusalem 91042, Israel.
Tel: +972-2-587 2202 Fax: +972-2-587 1101 or +972-2-642 6975
email: techsupport@alomone.com http://www.alomone.com

Molecular Tools for the Life Science Community

Certificate of Analysis

Anti-K_v11.1 (HERG) (extracellular)

(Voltage gated K⁺ channel subfamily H member 2, KCNH2, ether-a-go-go-related channel 1)

Product #: APC-109

Current Lot #: AN-17

Host: Rabbit.

Type: Polyclonal.

Epitope: peptide AFLLKETEEGPPATEC corresponding to residues 430-445 of human K_v11.1 (HERG) (Accession [Q12809](#)).

Epitope location: Extracellular, between S1 and S2 domains.

Homology with other species: Rat, mouse – 11 out of 16 residues identical; dog, rabbit-15 out of 16 residues identical.

Reactivity confirmed: Human, rat.

Identity of the peptide: Confirmed by mass-spectrography and amino acid analysis.

Purity: Affinity purified on immobilized antigen.

Sample sizes: 50 µl or 0.2 ml after reconstitution of the lyophilized powder.

Storage before reconstitution: Lyophilized powder can be stored intact at room temperature for several weeks. For longer periods, it should be stored at -20°C.

Reconstitution: 50 µl or 0.2 ml deionized water, depending on the sample size.

Antibody concentration after reconstitution: 0.6 mg/ml.

Buffer after reconstitution: phosphate buffered saline (PBS), pH 7.4, 1% BSA, 0.05% NaN₃.

Storage after reconstitution: the reconstituted solution can be stored at 4°C for up to 2 weeks. For longer periods, small aliquots should be stored at -20°C or below. Avoid multiple freezing and thawing. The further dilutions should be made using a carrier protein such as BSA (1%). Centrifuge **all** antibody preparations before use (10000 × g 5 min).

Control antigen included.

Control antigen reconstitution: 100 µl water.

Control antigen storage after reconstitution: -20 °C.

Preadsorption Control: 2 µg peptide per 1 µg antibody.

Standard quality control of each Lot: Western blotting.

Applications:

Western Blotting: HEK-K_v11.1 transfected cells (1:200).

Indirect Flow Cytometry: Intact live human cells (2-8µg antibody / 1x10⁶cells).

Immunocytochemistry: Intact live HEK-K_v11.1 transfected cells (1:25).

Immunohistochemistry: Rat heart sections.

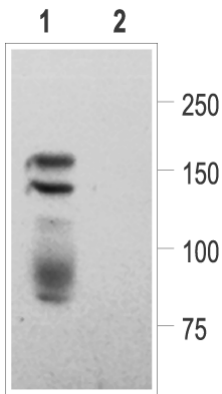
Immunoprecipitation: HEK-K_v11.1 transfected cells.

For research purposes only, not for human use.

Last Update: September 1, 2010.

References using this antibody:

1. Takemasa, H. *et al.* (2008) *Br. J. Pharmacol.* **153**, 439.
2. Chitchevlova, L.A. *et al.* (2008) *Pflugers Arch* **456**, 247.
3. Wu, Z-Y. *et al.* (2008) *Endocrinol.* **149**, 5061.
4. Claassen, S. *et al.* (2008) *J. Membr. Biol.* **222**, 31.
5. Delisle, B.P. *et al.* (2009) *J. Biol. Chem.* **284**, 2844.
6. Potet, F. *et al.* (2009) *J. Mol. Cell. Cardiol.* **46**, 257.



human chronic myelogenous leukemia) cells:

