

Anti-K_v11.2 (erg2)

(Voltage gated K⁺ channel subfamily H member 6, KCNH6, ether-a-go-go-related channel 2)

Product #: APC-114
Current Lot #: AN-01
Host: Rabbit.
Type: Polyclonal.

Epitope: Peptide TLNFVEFNLEKHRS(C), corresponding to amino acid residues 185- 198 of human K_v11.2 (Accession [Q9H252](#)).

Epitope location: Intracellular, N-terminal part.

Homology with other species: Rat, chicken-identical; mouse- 13 out of 14 residues identical.

Reactivity Confirmed: Rat.

Identity of the peptide: Confirmed by mass-spectrography and amino acid analysis.

Purity: Affinity purified on immobilized antigen.

Sample Sizes: 50 µl or 0.2 ml after reconstitution of the lyophilized powder.

Storage before Reconstitution: Lyophilized powder can be stored intact at room temperature for several weeks. For longer periods, it should be stored at -20°C.

Reconstitution: 50 µl or 0.2 ml deionized water, depending on the sample size.

Antibody Concentration after Reconstitution: 0.75 mg/ml.

Buffer after Reconstitution: Phosphate buffered saline (PBS), pH 7.4, 1% BSA, 0.025% NaN₃.

Storage after Reconstitution: The reconstituted solution can be stored at 4°C for up to 2 weeks. For longer periods, small aliquots should be stored at -20°C or below. Avoid multiple freezing and thawing. Further dilutions should be made using a carrier protein such as BSA (1%). Centrifuge **all** antibody preparations before use (10000 × g 5 min).

Control antigen included.

Control Antigen Storage before Reconstitution: Lyophilized powder can be stored intact at room temperature for several weeks. For longer periods, it should be stored at -20°C.

Control Antigen Reconstitution: 100 µl water.

Control Antigen Storage after Reconstitution: -20 °C.

Preadsorption Control: 1 µg peptide per 1 µg antibody.

Standard Quality Control of Each Lot: Western blotting.

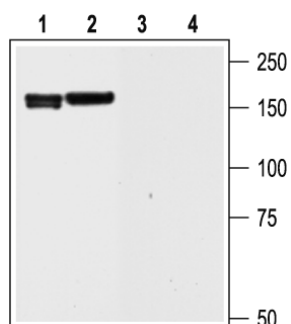
Applications:

Western Blotting: Rat brain and rat cortex lysate (1:200).

Immunohistochemistry: Rat brain sections.

For research purposes only, not for human use.

Last Update: June 25, 2006.



Western blotting of rat brain (1 and 3) and rat cortex (2 and 4) lysate:
1, 2. Anti- K_v11.2 (erg2) antibody (1:200).
3, 4. Anti- K_v11.2 (erg2) antibody, preincubated with the control peptide antigen.