

Anti-K_v12.3 (Elk3)

(Voltage gated K⁺ channel subfamily H member 4, KCNH4, ether-a-go-go like K⁺ channel 1, BEC2)

Product #: APC-116
Current Lot #: AN-01
Host: Rabbit.
Type: Polyclonal.

Epitope: Peptide CRLNQEISRLNQEVS, corresponding to amino acids 881-895 of rat K_v12.3 (Accession [Q9R1T9](#)).

Epitope location: Intracellular, C-terminal part.

Homology with other species: Human- identical.

Reactivity Confirmed: Rat.

Identity of the peptide: Confirmed by mass-spectrography and amino acid analysis.

Purity: Affinity purified on immobilized antigen.

Sample Sizes: 50 µl or 0.2 ml after reconstitution of the lyophilized powder.

Storage before Reconstitution: Lyophilized powder can be stored intact at room temperature for several weeks. For longer periods, it should be stored at -20°C.

Reconstitution: 50 µl or 0.2 ml deionized water, depending on the sample size.

Antibody Concentration after Reconstitution: 0.8 mg/ml.

Buffer after Reconstitution: Phosphate buffered saline (PBS), pH 7.4, 1% BSA, 0.025% NaN₃.

Storage after Reconstitution: The reconstituted solution can be stored at 4°C for up to 2 weeks. For longer periods, small aliquots should be stored at -20°C or below. Avoid multiple freezing and thawing. Further dilutions should be made using a carrier protein such as BSA (1%). Centrifuge **all** antibody preparations before use (10000 × g 5 min).

Control antigen included.

Control Antigen Storage before Reconstitution: Lyophilized powder can be stored intact at room temperature for several weeks. For longer periods, it should be stored at -20°C.

Control Antigen Reconstitution: 100 µl water.

Control Antigen Storage after Reconstitution: -20 °C.

PreadSORption Control: 1 µg peptide per 1 µg antibody.

Standard Quality Control of Each Lot: Western blotting.

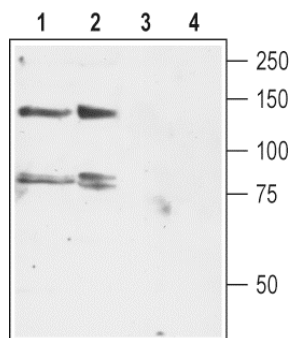
Applications:

Western blotting: Rat brain and cerebellum lysate (1:400).

Immunohistochemistry: Rat testis sections (paraffin-embedded) (1:50).

For research purposes only, not for human use.

Last Update: March 30, 2008.



Western blot analysis of rat brain (lanes 1 and 3) and cerebellum (lanes 2 and 4) lysates:
1, 2. **Anti- K_v12.3 (Elk3) antibody** (#APC-116) (1:200).
3, 4. Anti- K_v12.3 (Elk3) antibody, preincubated with the control peptide antigen.