

Anti-KCNE3 (MiRP2)

(K⁺ channel β subunit MiRP2, MinK-related peptide 2)

Product #: APC-118

Current Lot #: AN-01, AN-02, AN-03

Host: Rabbit.

Type: Polyclonal.

Epitope: Peptide (C)RSRKVDKRSDPYH, corresponding to amino acid residues 81-93 of human KCNE3 (Accession [Q9Y6H6](#)).

Epitope location: Intracellular, C-terminal part.

Homology with other species: Rat, mouse, dog, pig- identical

Reactivity Confirmed: Rat.

Identity of the peptide: Confirmed by mass-spectrography and amino acid analysis.

Purity: Affinity purified on immobilized antigen.

Sample Sizes: 50 μ l or 0.2 ml after reconstitution of the lyophilized powder.

Storage before Reconstitution: Lyophilized powder can be stored intact at room temperature for several weeks. For longer periods, it should be stored at -20°C.

Reconstitution: 50 μ l or 0.2 ml deionized water, depending on the sample size.

Antibody Concentration after Reconstitution: 0.8 mg/ml.

Buffer after Reconstitution: Phosphate buffered saline (PBS), pH 7.4, 1% BSA, 0.025% NaN₃.

Storage after Reconstitution: The reconstituted solution can be stored at 4°C for up to 2 weeks. For longer periods, small aliquots should be stored at -20°C or below. Avoid multiple freezing and thawing. Further dilutions should be made using a carrier protein such as BSA (1%). Centrifuge **all** antibody preparations before use (10000 \times g 5 min).

Control Antigen Included.

Control Antigen Storage before Reconstitution: Lyophilized powder can be stored intact at room temperature for several weeks. For longer periods, it should be stored at -20°C.

Control Antigen Reconstitution: 100 μ l water.

Control Antigen Storage after Reconstitution: -20 °C.

Preadsorption Control: 1 μ g peptide per 1 μ g antibody.

Standard Quality Control of Each Lot: Western blotting.

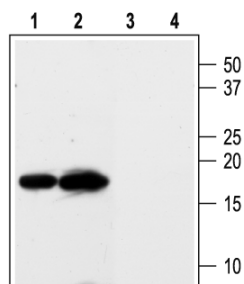
Applications:

Western Blotting: Rat kidney and heart membranes (1:200).

Immunohistochemistry: Rat kidney sections.

For research purposes only, not for human use.

Last Update: August 22, 2007.



Western blotting of rat kidney (lanes 1 and 3) and rat heart (lanes 2 and 4) membranes:

1, 2. Anti- KCNE3 antibody (1:200).

3, 4. Anti- KCNE3 antibody, preincubated with the control peptide antigen.