

## Anti-K<sub>v</sub>4.1

(Voltage-gated K<sup>+</sup> channel subfamily D member 1, KCND1)

**Product #:** APC-119  
**Current Lot #:** AN-02, AN-03  
**Host:** Rabbit.  
**Type:** Polyclonal.

**Epitope:** Peptide (C)KRRAIRLANSTAS, corresponding to amino acid residues 538-550 of the human K<sub>v</sub>4.1 (Accession [Q9NSA2](#)).

**Epitope location:** Intracellular, C-terminal part.

**Homology with other species:** Mouse, rat - 12/13 residues identical.

**Reactivity Confirmed:** Human, rat, mouse

**Identity of a peptide:** confirmed by amino acid analysis and mass-spectrography.

**Purity:** Affinity purified on immobilized peptide.

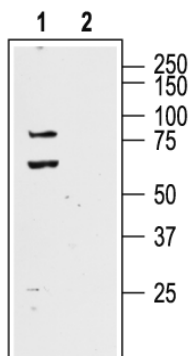
**Sample Sizes:** 50 µl or 0.2 ml after reconstitution of the lyophilized powder.

**Storage before Reconstitution:** Lyophilized powder can be stored intact at room temperature for several weeks. For longer periods, it should be stored at -20°C.

**Reconstitution:** 50 µl or 0.2 ml deionized water, depending on the sample size.

**Antibody Concentration after Reconstitution:** 0.6 mg/ml

**Buffer after Reconstitution:** phosphate buffered saline (PBS), pH 7.4, 1% BSA, 0.025% NaN<sub>3</sub>.



Western blotting of rat brain lysate:

1. Anti-K<sub>v</sub>4.1 (1:400)
2. Anti- K<sub>v</sub>4.1, preincubated with the control peptide antigen.

**Storage after Reconstitution:** the reconstituted solution can be stored at 4°C for up to 2 weeks. For longer periods, small aliquots should be stored at -20°C or below. Avoid multiple freezing and thawing. The further dilutions should be made using a carrier protein such as BSA (1%). Centrifuge **all** antibody preparations before use (10000 × g 5 min).

**Control Antigen Included.**

**Control Antigen Storage before Reconstitution:** Lyophilized powder can be stored intact at room temperature for several weeks. For longer periods, it should be stored at -20°C.

**Control Antigen Reconstitution:** 100 µl water.

**Control Antigen Storage after Reconstitution:** -20 °C.

**Preadsorption Control:** 1 µg peptide per 1 µg antibody.

**Standard Quality Control of Each Lot:** Western blotting.

**Applications:**

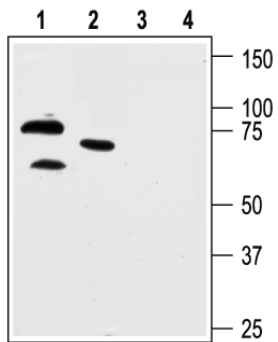
**Western Blotting:** Rat and mouse brain lysate and human neuroblastoma cell line SH-SY5Y (1:400).

**For research purposes only, not for human use.**

**Last Update:** October 9, 2007.

**References using this antibody:**

1. Wang, G. *et al.* (2007) *J. Biol. Chem.* **282**, 13637.
2. Xia, F. *et al.* (2007) *Endocrinol.* **148**, 2157.



Western blotting of human neuroblastoma cell line SH-SY5Y (lanes 1 and 3) and mouse brain lysate (lanes 2 and 4):  
1, 2. Anti-K<sub>v</sub>4.1 (1:400)  
3, 4. Anti- K<sub>v</sub>4.1, preincubated with the control peptide antigen.