

## Anti-K<sub>v</sub>2.2

(Voltage-gated K<sup>+</sup> channel subfamily B member 2, KCNB2, CDRK)

**Product #:** APC-120

**Current Lot #**AN-01

**Host:** Rabbit.

**Type:** Polyclonal.

**Epitope:** Peptide CRQDIYQAVGEVKKD, corresponding to amino acid residues 859-873 of rat K<sub>v</sub>2.2 (Accession [Q63099](#)).

**Epitope location:** Intracellular, C-terminal.

**Homology with other species:** Mouse- identical; human - 13/15 amino acid residues identical.

**Reactivity Confirmed:** Rat, mouse, human.

**Identity of the peptide:** Confirmed by amino acid analysis and mass-spectrography.

**Purity:** Affinity purified on immobilized peptide.

**Sample Sizes:** 50 µl or 0.2 ml after reconstitution of the lyophilized powder.

**Storage before Reconstitution:** Lyophilized powder can be stored intact at room temperature for several weeks. For longer periods, it should be stored at -20°C.

**Reconstitution:** 50 µl or 0.2 ml deionized water, depending on the sample size.

**Antibody Concentration after Reconstitution:** 0.8 mg/ml

**Buffer after Reconstitution:** Phosphate buffered saline (PBS), pH 7.4, 1% BSA, 0.025% NaN<sub>3</sub>.

**Storage after Reconstitution:** The reconstituted solution can be stored at 4°C for up to 2 weeks. For longer periods, small aliquots should be stored at -20°C or below. Avoid multiple freezing and thawing. The further dilutions should be made using a carrier protein such as BSA (1%). Centrifuge **all** antibody preparations before use (10000 × g 5 min).

### Control Antigen Included.

**Control Antigen Storage before Reconstitution:** Lyophilized powder can be stored intact at room temperature for several weeks. For longer periods, it should be stored at -20°C.

**Control Antigen Reconstitution:** 100 µl water.

**Control Antigen Storage after Reconstitution:** -20 °C.

**Preadsorption Control:** 1 µg peptide per 1 µg antibody.

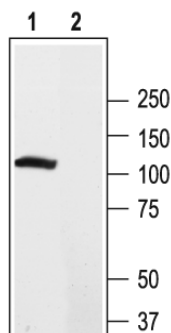
**Standard Quality Control of Each Lot:** Western blotting.

### Applications:

**Western Blotting:** Rat brain lysate (1:1000- 1:2000)

**For research purposes only, not for human use.**

**Last Update:** July 19, 2006.



Western blot analysis of rat brain lysate:

1. **Anti-K<sub>v</sub>2.2** antibody (#APC-120), (1:2000).
2. Anti-K<sub>v</sub>2.2 antibody, preincubated with the control peptide antigen.