

Anti-K_{ir}5.1 (Inward rectifier K⁺ channel 16, KCNJ16)

Product #: APC-123

Current Lot #AN-01

Host: Rabbit

Type: Polyclonal.

Epitope: Peptide HDVLEVKRKYYKVNC, corresponding to amino acid residues 311-325 of rat Kir5.1 (Accession [P52191](#)).

Putative epitope location: Intracellular, C-term.

Homology with other species: Mouse- identical; human 14 out of 15 residues-identical

Reactivity Confirmed: Rat, mouse.

Identity of the peptide: Confirmed by amino acid analysis.

Purity: Affinity purified on immobilized peptide.

Sample Sizes: 50 µl or 0.2 ml after reconstitution of the lyophilized powder.

Storage before Reconstitution: Lyophilized powder can be stored intact at room temperature for several weeks. For longer periods, it should be stored at -20°C.

Reconstitution: 50 µl or 0.2 ml deionized water, depending on the sample size.

Antibody Concentration after Reconstitution: 0.8 mg/ml

Buffer after Reconstitution: Phosphate buffered saline (PBS), pH 7.4, 1% BSA, 0.025% NaN₃.

Storage after Reconstitution: The reconstituted solution can be stored at 4°C for up to 2 weeks. For longer periods, small aliquots should be stored at -20°C or below. Avoid multiple freezing and thawing. The further dilutions should be made using a carrier protein such as BSA (1%). Centrifuge **all** antibody preparations before use (10000 × g 5 min).

Control Antigen Included.

Control Antigen Storage before Reconstitution: Lyophilized powder can be stored intact at room temperature for several weeks. For longer periods, it should be stored at -20°C.

Control Antigen Reconstitution: 100 µl water.

Control Antigen Storage after Reconstitution: -20 °C.

Preadsorption Control: 1 µg peptide per 1 µg antibody.

Standard Quality Control of Each Lot: Western blotting.

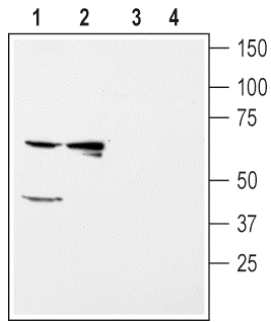
Applications:

Western Blot analysis: Rat kidney and liver membranes (1: 200).
Mouse brain and kidney membranes (1:200).

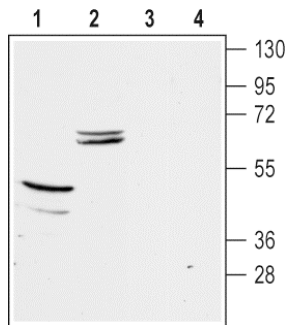
Immunohistochemistry: Rat kidney sections (paraffin embedded) (1:100).

For research purposes only, not for human use.

Last Update: October 13, 2008.



Western blot analysis of rat kidney (lanes 1 and 3) and liver (lanes 2 and 4) membranes:
 1, 2. **Anti- Kir5.1** antibody (#APC-123) (1:200).
 3, 4. Anti-Kir5.1, preincubated with the control peptide antigen.



Western blot analysis of mouse brain (lanes 1 and 3) and kidney (lanes 2 and 4) membranes:
 1, 2. **Anti- Kir5.1** antibody (#APC-123) (1:200).
 3, 4. Anti-Kir5.1, preincubated with the control peptide antigen.