

Anti-K_{ir}7.1 (extracellular)

(Inward rectifier K⁺ channel member 13, KCNJ13)

Product #: APC-125
Current Lot #: AN-01
Host: Rabbit.
Type: Polyclonal.

Epitope: Peptide (C)EMNGDLEIDHDVPPE, corresponding to amino acid residues 80-94 of rat K_{ir}7.1 (Accession [O70617](#))

Putative epitope location: Extracellular loop.

Homology with other species: Mouse- identical; human- 13/15 amino acid residues identical.

Reactivity Confirmed: Rat, mouse, human.

Identity of the Peptide: Confirmed by amino acid analysis.

Purity: Affinity purified on immobilized antigen.

Sample Sizes: 50 µl or 0.2 ml after reconstitution of the lyophilized powder.

Storage before Reconstitution: Lyophilized powder can be stored intact at room temperature for several weeks. For longer periods, it should be stored at -20°C.

Reconstitution: 50 µl or 0.2 ml deionized water, depending on the sample size.

Antibody Concentration after Reconstitution: 0.8 mg/ml.

Buffer after Reconstitution: phosphate buffered saline (PBS), pH 7.4, 1% BSA, 0.025% NaN₃.

Storage after Reconstitution: The reconstituted solution can be stored at 4°C for up to 2 weeks. For longer periods, small aliquots should be stored at -20°C or below. Avoid multiple freezing and thawing. The further dilutions should be made using a carrier protein such as BSA (1%). Centrifuge **all** antibody preparations before use (10000 × g 5 min).

Control Antigen Included.

Control Antigen Storage before Reconstitution: Lyophilized powder can be stored intact at room temperature for several weeks. For longer periods, it should be stored at -20°C.

Control Antigen Reconstitution: 100 µl water.

Control Antigen Storage after Reconstitution: -20 °C.

PreadSORption Control: 1 µg peptide per 1 µg antibody.

Standard Quality Control of Each Lot: Western blot analysis.

Applications:

Western Blotting: Rat and mouse samples (1:200).

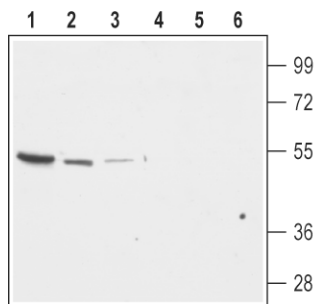
Immunohistochemistry: Rat kidney sections (paraffin embedded), (1:100).

Indirect flow cytometry: Human Jurkat T-cell leukemia cells (5-10 µg antibody/1x10⁶ cells).

Additional figures can be found at www.alomone.com.

For research purposes only, not for human use.

Last Update: March 9, 2010.



Western blot analysis of rat brain membranes (lanes 1 and 4), mouse brain lysates (lanes 2 and 5) and mouse kidney lysates (lanes 3 and 6):
1-3. **Anti-K_{ir}7.1 (extracellular)** antibody (#APC-125), (1:200).
4-6. Anti-K_{ir}7.1 antibody, preincubated with the control peptide antigen.