

Anti-K_{Ca}4.2 (Slick)

(Na⁺ and Cl⁻-activated K⁺ channel; Slo2.1; KCNT2)

Product #: APC-126
Current Lot #: AN-01
Host: Rabbit.
Type: Polyclonal.

Epitope: Peptide (C)KDVKDPGHRSIHR, corresponding to amino acid residues 991-1004 of rat K_{Ca}4.2 (Accession [Q6UVM4](#))

Putative Epitope Location: Intracellular, C-terminus.

Homology with other Species: Mouse - 13/14 amino acid residues identical; human - 10/14 amino acid residues identical.

Reactivity Confirmed: Rat, mouse.

Identity of the Peptide: Confirmed by amino acid analysis.

Purity: Affinity purified on immobilized antigen.

Sample Sizes: 50 µl or 0.2 ml after reconstitution of the lyophilized powder.

Storage before Reconstitution: Lyophilized powder can be stored intact at room temperature for several weeks. For longer periods, it should be stored at -20°C.

Reconstitution: 50 µl or 0.2 ml deionized water, depending on the sample size.

Antibody Concentration after Reconstitution: 0.8 mg/ml.

Buffer after Reconstitution: phosphate buffered saline (PBS), pH 7.4, 1% BSA, 0.025% NaN₃.

Storage after Reconstitution: The reconstituted solution can be stored at 4°C for up to 2 weeks. For longer periods, small aliquots should be stored at -20°C or below. Avoid multiple freezing and thawing. The further dilutions should be made using a carrier protein such as BSA (1%). Centrifuge **all** antibody preparations before use (10000 × g 5 min).

Control Antigen Included.

Control Antigen Storage before Reconstitution: Lyophilized powder can be stored intact at room temperature for several weeks. For longer periods, it should be stored at -20°C.

Control Antigen Reconstitution: 100 µl water.

Control Antigen Storage after Reconstitution: -20 °C.

PreadSORption Control: 1 µg peptide per 1 µg antibody.

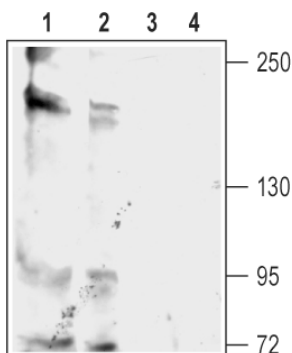
Standard Quality Control of each Lot: Western blot analysis.

Applications:

Western Blot Analysis: Rat and mouse brain samples (1:200).

For research purposes only, not for human use.

Last Update: May 20, 2010.



Western blot analysis of rat (lanes 1 and 3) and mouse (lanes 2 and 4) brain membranes:

1, 2. **Anti-K_{Ca}4.2 (Slick)** antibody (#APC-126), (1:200).

3, 4. **Anti-K_{Ca}4.2 (Slick)** antibody, preincubated with the control peptide antigen.