

## Anti-Caspr2

(Contactin-Associated Protein 2)

**Product #:** APZ-005  
**Current Lot #:** AN-01  
**Host:** Rabbit.  
**Type:** Polyclonal.

**Epitope:** Peptide (C)DPNF TETID ESKKE WLI, corresponding to amino acid residues 1315-1331 of human Caspr2 (Accession [NP\\_054860](#))

**Epitope location:** Intracellular, C-terminus.

**Homology with other species:** Mouse - identical.

**Reactivity Confirmed:** Rat.

**Identity of a peptide:** Confirmed by mass-spectrography and amino acid analysis.

**Purity:** Affinity purified on immobilized antigen.

**Sample Sizes:** 50  $\mu$ l or 0.2 ml after reconstitution of the lyophilized powder.

**Storage before Reconstitution:** Lyophilized powder can be stored intact at room temperature for several weeks. For longer periods, it should be stored at -20°C.

**Reconstitution:** 50  $\mu$ l or 0.2 ml deionized water, depending on the sample size.

**Antibody Concentration after Reconstitution:** 0.3 mg/ml.

**Buffer after Reconstitution:** phosphate buffered saline (PBS), pH 7.4, 1% BSA, 5% sucrose, 0.025%  $\text{NaN}_3$ .

**Storage after Reconstitution:** the reconstituted solution can be stored at 4°C for up to 2 weeks. For longer periods, small aliquots should be stored at -20°C or below. Avoid multiple freezing and thawing. The further dilutions should be made using a carrier protein such as BSA (1%). Centrifuge **all** antibody preparations before use (10000  $\times$  g 5 min).

**Control Antigen Included:** 20  $\mu$ g of lyophilized peptide (Mw 2267 Da).

**Control Antigen Storage before Reconstitution:** Lyophilized powder can be stored intact at room temperature for several weeks. For longer periods, it should be stored at -20°C.

**Control Antigen Reconstitution:** 100  $\mu$ l water.

**Control Antigen Storage after Reconstitution:** -20 °C.

**Preadsorption Control:** 1  $\mu$ g peptide per 1  $\mu$ g antibody.

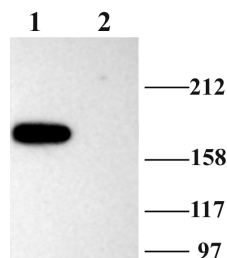
**Standard Quality Control of Each Lot:** Western blotting.

### Applications:

**Western Blotting:** Rat brain membranes (1:1000).

**For research purposes only, not for human use.**

**Last Update:** May 17, 2001



Western blotting of rat brain membranes

1. Anti-Caspr2, 1:1000
2. Anti-Caspr2, preincubated with the control peptide antigen