

## Anti-Nav1.8 (SNS, SCN10A, PN3)

Product #: ASC-016  
Current Lot #: AN-04  
Host: Rabbit.

**Epitope:** Peptide (C)EDEVAAKEGNSPGPQ corresponding to residues 1943-1956 of rat Nav1.8 (Accession [Q63554](#)).

**Epitope location:** C-Terminus, Intracellular.

**Homology with other species:** Mouse- 14/15 residues identical, human-7/15 residues identical.

**Reactivity Confirmed:** Rat

**Identity of a peptide:** Confirmed by mass-spectrography and amino acid analysis.

**Purity:** Affinity purified on immobilized antigen.

**Sample Sizes:** 50  $\mu$ l or 0.2 ml after reconstitution of the lyophilized powder.

**Storage before Reconstitution:** Lyophilized powder can be stored intact at room temperature for several weeks. For longer periods, it should be stored at -20°C.

**Reconstitution:** 50  $\mu$ l or 0.2 ml deionized water, depending on the sample size.

**Antibody Concentration after Reconstitution:** 0.8mg/ml.

**Buffer after Reconstitution:** Phosphate buffered saline (PBS), pH 7.4, 1% BSA, 0.05% NaN<sub>3</sub>.

**Storage after Reconstitution:** The reconstituted solution can be stored at 4°C for up to 2 weeks. For longer periods, small aliquots should be stored at -20°C or below. Avoid multiple freezing and thawing. The further dilutions should be made using a carrier protein such as BSA (1%). Centrifuge all antibody preparations before use (10000  $\times$  g 5 min).

**Control Antigen Included.**

**Control Antigen Storage before Reconstitution:** Lyophilized powder can be stored intact at room temperature for several weeks. For longer periods, it should be stored at -20°C.

**Control Antigen Reconstitution:** 100  $\mu$ l water.

**Control Antigen Storage after Reconstitution:** -20 °C.

**Preadsorption Control:** 1  $\mu$ g peptide per 1  $\mu$ g antibody.

**Standard Quality Control of Each Lot:** Western blotting.

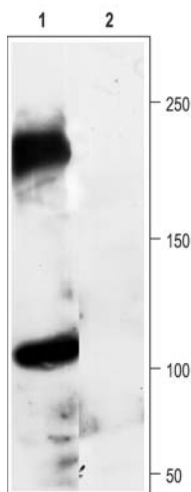
**Applications:**

**Western Blotting:** Rat DRG lysates (1:200).

**Immunohistochemistry:** Adult rat DRG frozen sections.

For research purposes only, not for human use.

Last Update: March 1, 2007.



Western blotting of rat DRG lysates:

1. Anti-Nav1.8 antibody, 1:200.
2. Anti-Nav1.8 antibody, preincubated with the control peptide antigen