

Anti-Nav1.5 (SKM2, SCN5A)

Product #: ASC-005
Current Lot #: AN-08
Host: Rabbit.

Epitope: Peptide, DRLPKSDESDGPRALNQLS(C), corresponding to amino acid residues 493-511 of rH1 (Accession [P15389](#)).

Putative epitope location: I/II intracellular loop.

Homology with other species: Mouse – identical; human - 17/19 amino acid residues identical.

Reactivity Confirmed: Rat, human.

Identity of a peptide: Confirmed by amino acid analysis.

Purity: Affinity purified on immobilized antigen.

Sample Sizes: 50 μ l or 0.2 ml after reconstitution of the lyophilized powder.

Storage before Reconstitution: Lyophilized powder can be stored intact at room temperature for several weeks. For longer periods, it should be stored at -20°C.

Reconstitution: 50 μ l or 0.2 ml deionized water, depending on the sample size.

Antibody Concentration after Reconstitution: 0.8 mg/ml.

Buffer after Reconstitution: Phosphate buffered saline (PBS), pH 7.4, 1% BSA, 0.05% NaN₃.

Storage after Reconstitution: The reconstituted solution can be stored at 4°C for up to 2 weeks. For longer periods, small aliquots should be stored at -20°C or below. Avoid multiple freezing and thawing. The further dilutions should be made using a carrier protein such as BSA (1%). Centrifuge all antibody preparations before use (10000 \times g 5 min).

Control Antigen Included.

Control Antigen Storage before Reconstitution: Lyophilized powder can be stored intact at room temperature for several weeks. For longer periods, it should be stored at -20°C.

Control Antigen Reconstitution: 100 μ l water.

Control Antigen Storage after Reconstitution: -20°C.

PreadSORption Control: 1 μ g peptide per 1 μ g antibody.

Standard Quality Control of Each Lot: Western blot analysis.

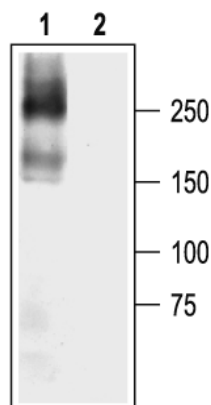
Applications:

Western Blotting: Rat heart membranes and human-Nav1.5 transfected HEK-293 cells (1:100-1:200).

Immunohistochemistry: Rat heart paraffin sections.

For research purposes only, not for human use.

Last Update: August 14, 2007.



Western blot analysis of human-Nav1.5 transfected HEK-293 cells:

1. **Anti-Nav1.5** antibody (#ASC-005), (1:200).
2. Anti-Nav1.5, antibody preincubated with the control peptide antigen.